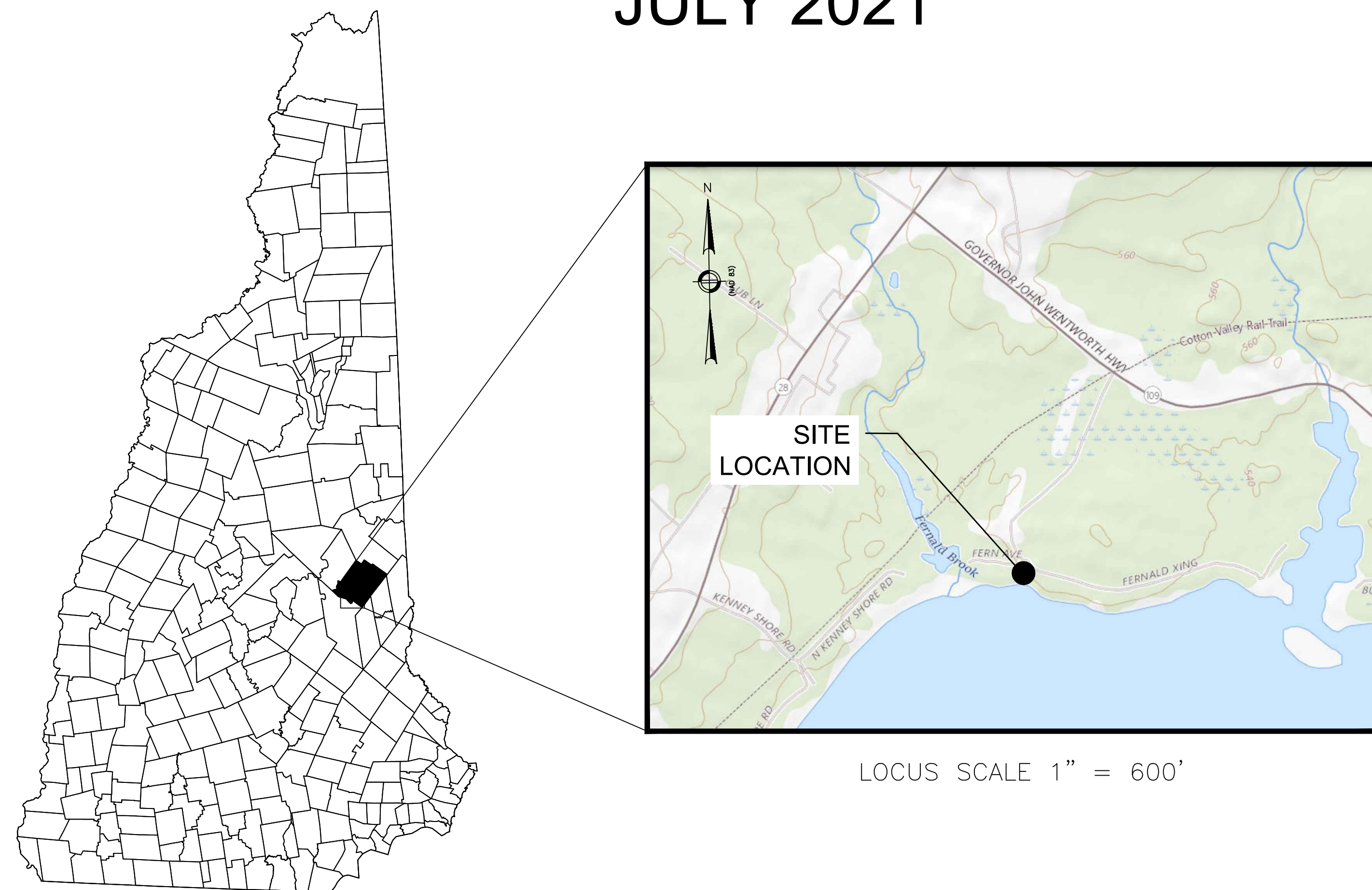


TOWN OF WOLFEBORO

LAKE WENTWORTH/CRESCENT LAKE WATERSHED MANAGEMENT PLAN - PHASE IV FERNALD CROSSING WOLFEBORO, NH

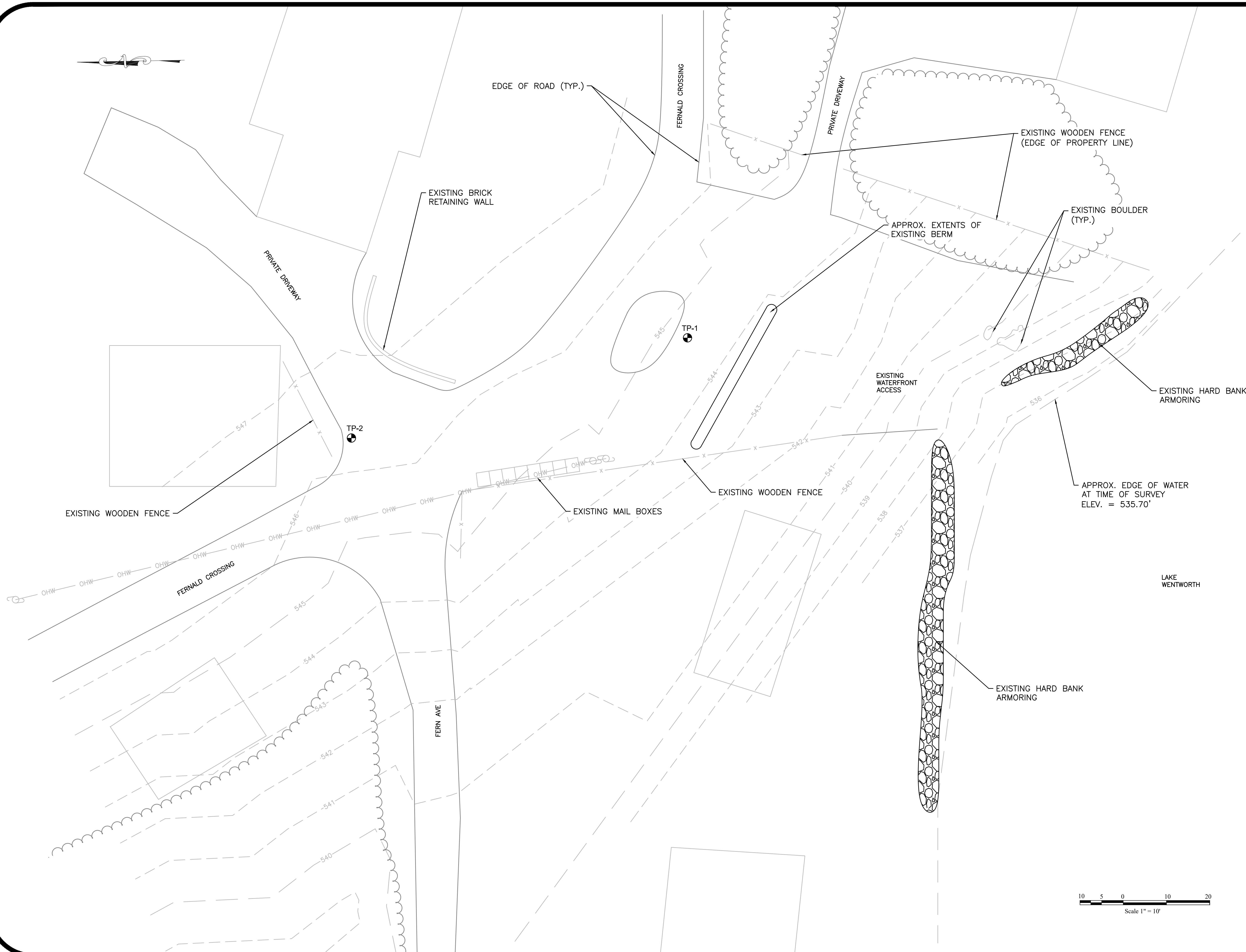
JULY 2021



<u>SHEET</u>	<u>TITLE</u>
C-1	EXISTING CONDITIONS
C-2	PROPOSED CONDITIONS
D-1	EROSION CONTROL DETAILS
D-2	PROJECT DETAILS



COMPREHENSIVE ENVIRONMENTAL INCORPORATED • MERRIMACK, NEW HAMPSHIRE



GENERAL NOTES

No.	Revision/Issue	Date

COMPREHENSIVE ENVIRONMENTAL
INCORPORATED

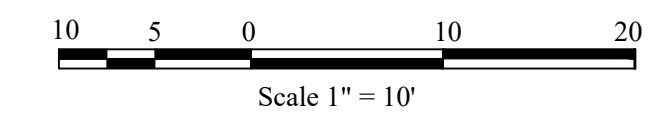
21 Depot Street
MERRIMACK, NH 03054

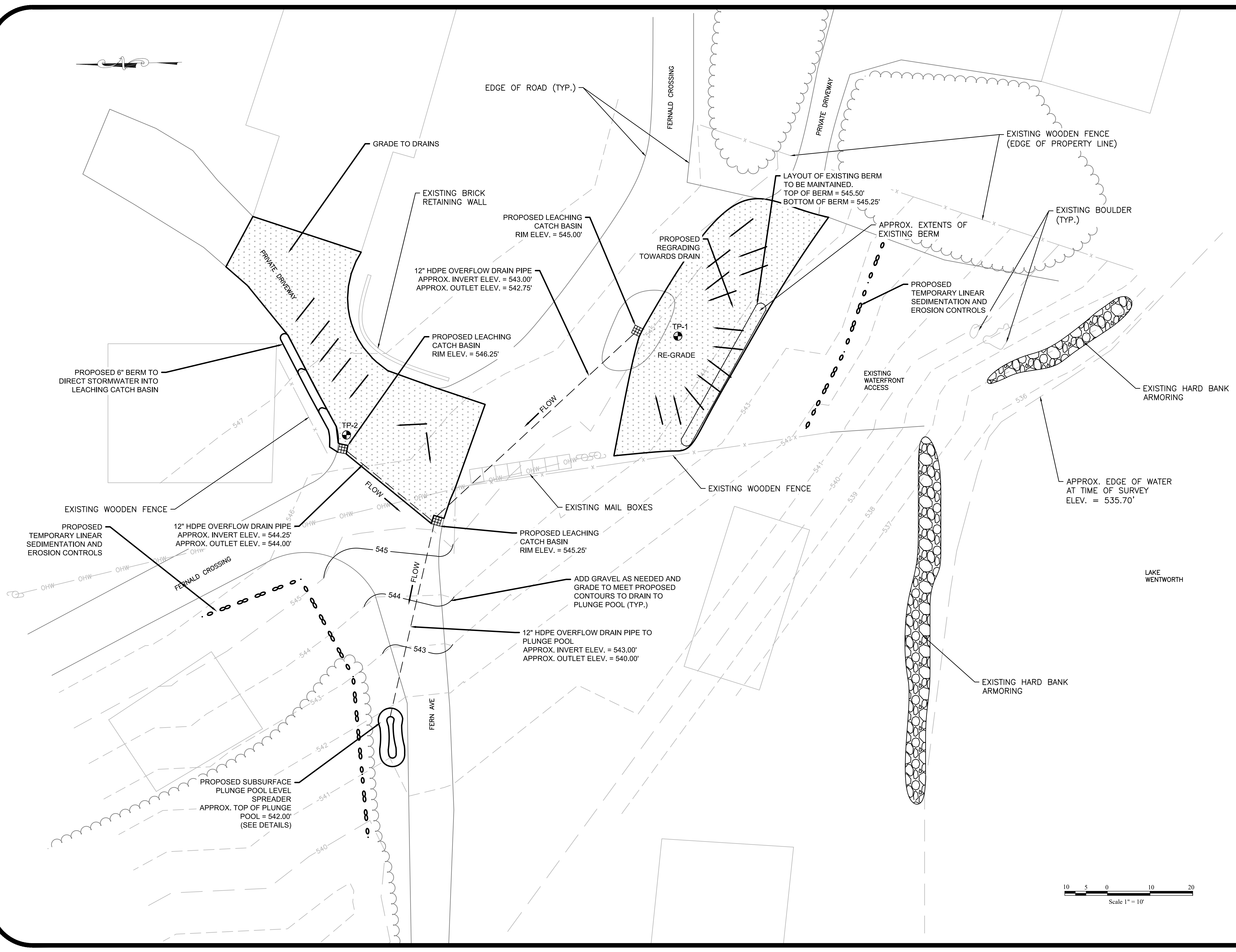
EXISTING CONDITIONS
PLAN VIEW

Town of Wolfeboro, NH

Project No.: 219-15
Date: 11/17/2020
Drawn By: NBS
Checked By: ML
Scale: AS NOTED

Sheet
C-1





GENERAL NOTES

No.	Revision/Issue	Date

COMPREHENSIVE ENVIRONMENTAL INCORPORATED

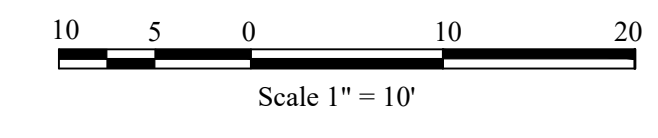


21 Depot Street
MERRIMACK, NH 03054

PROPOSED CONDITIONS
PLAN VIEW

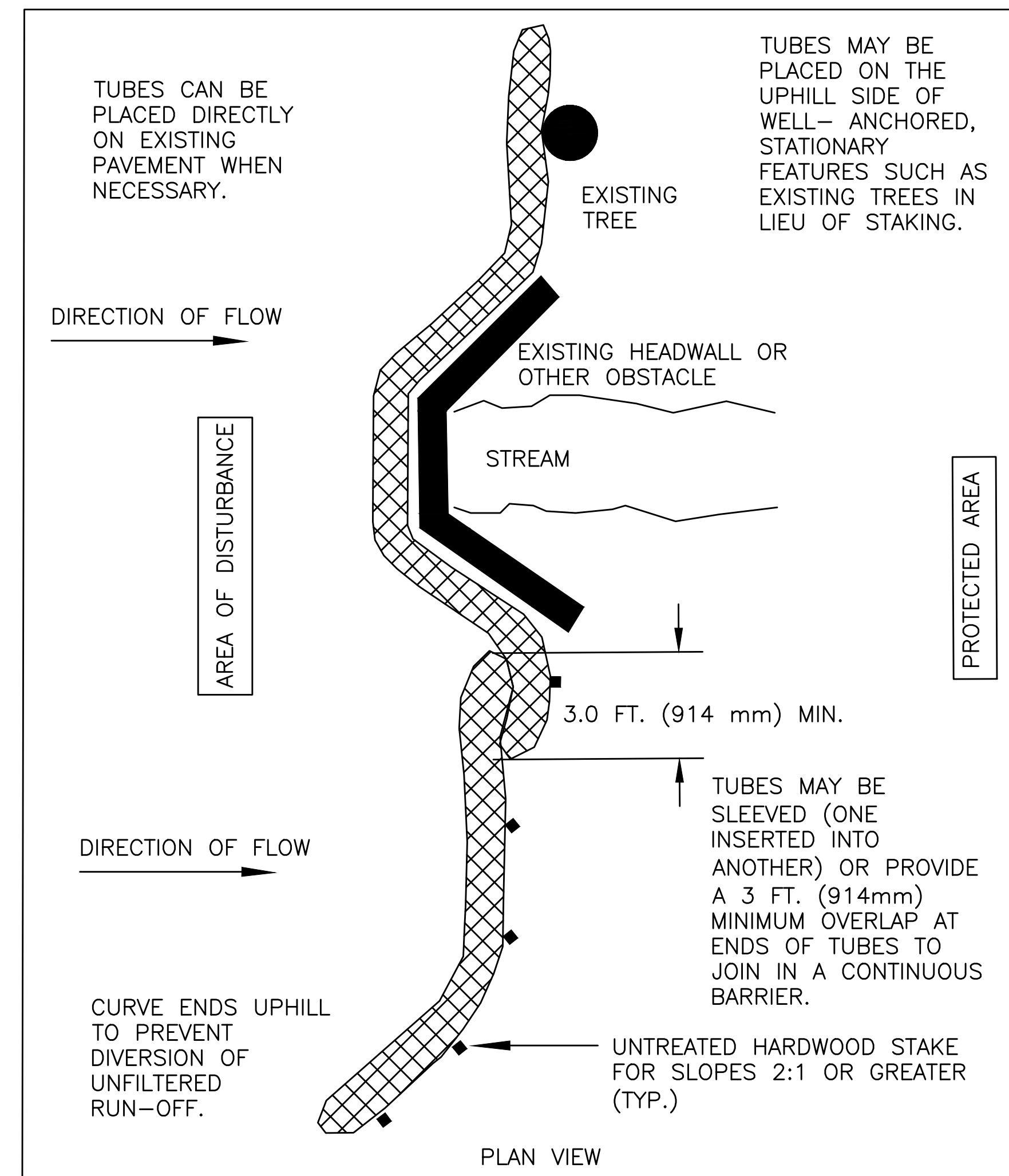
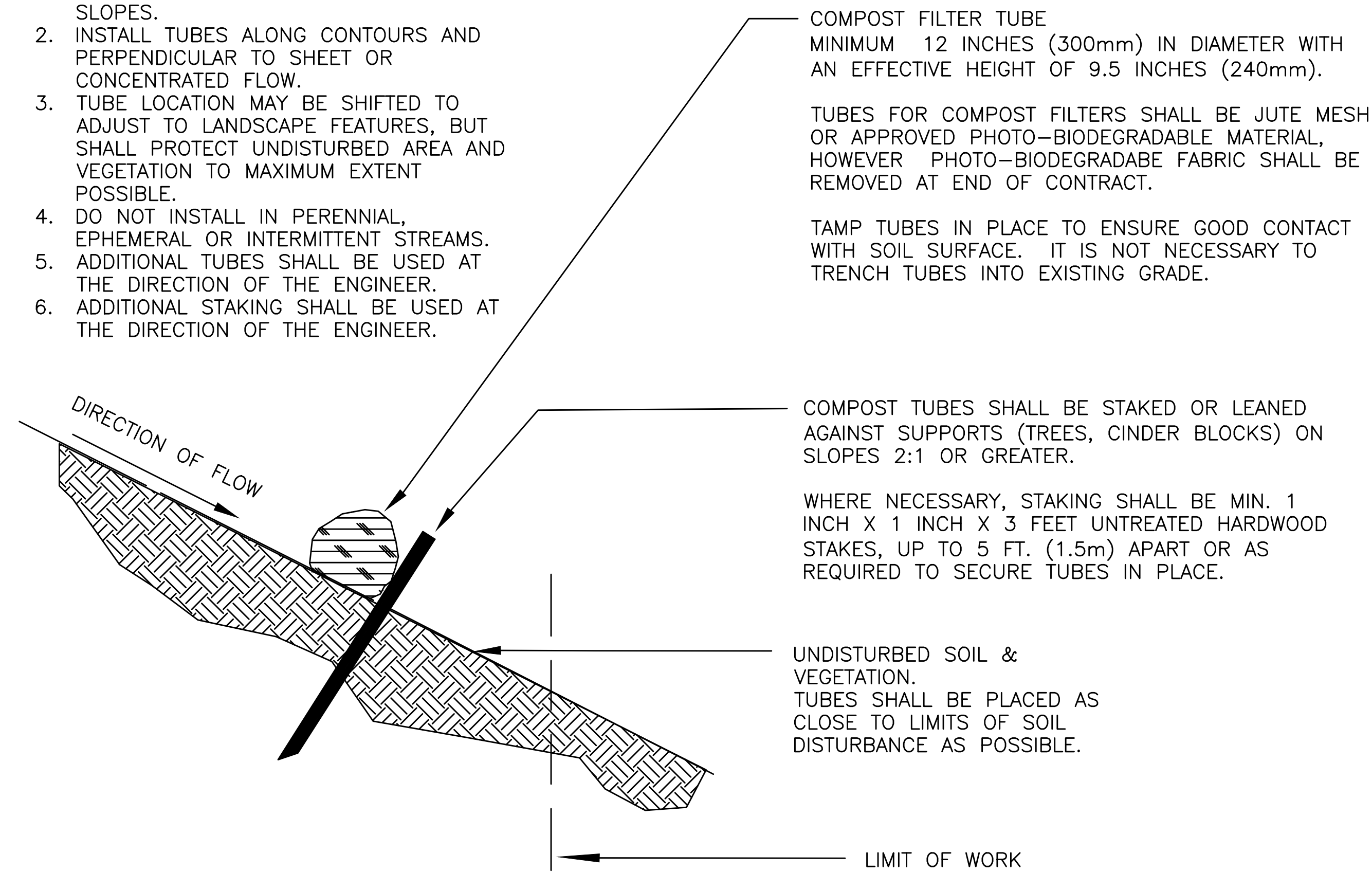
Town of Wolfeboro, NH

Project No.: 219-15	Sheet
Date: 12/30/2020	C-2
Drawn By: NBS	
Checked By: ML	
Scale: AS NOTED	



GENERAL NOTES:

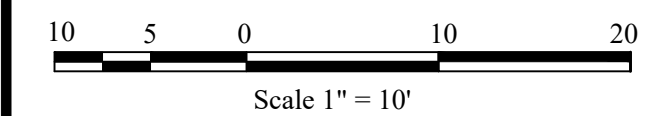
1. PROVIDE A MINIMUM TUBE DIAMETER OF 12 INCHES (300mm) FOR SLOPES UP TO 50 FEET (15.24m) IN LENGTH WITH A SLOPE RATIO OF 3H:1V OR STEEPER. LONGER SLOPES OF 3H:1V MAY REQUIRE LARGER TUBE DIAMETER OR ADDITIONAL COURSING OF FILTER TUBES TO CREATE A FILTER BERM. REFER TO MANUFACTURER'S RECOMMENDATIONS FOR SITUATIONS WITH LONGER OR STEEPER SLOPES.
2. INSTALL TUBES ALONG CONTOURS AND PERPENDICULAR TO SHEET OR CONCENTRATED FLOW.
3. TUBE LOCATION MAY BE SHIFTED TO ADJUST TO LANDSCAPE FEATURES, BUT SHALL PROTECT UNDISTURBED AREA AND VEGETATION TO MAXIMUM EXTENT POSSIBLE.
4. DO NOT INSTALL IN PERENNIAL, EPHEMERAL OR INTERMITTENT STREAMS.
5. ADDITIONAL TUBES SHALL BE USED AT THE DIRECTION OF THE ENGINEER.
6. ADDITIONAL STAKING SHALL BE USED AT THE DIRECTION OF THE ENGINEER.



**LINEAR SEDIMENTATION AND EROSION
CONTROL DETAIL**

SCALE: N.T.S.

GENERAL NOTES



No.	Revision/Issue	Date

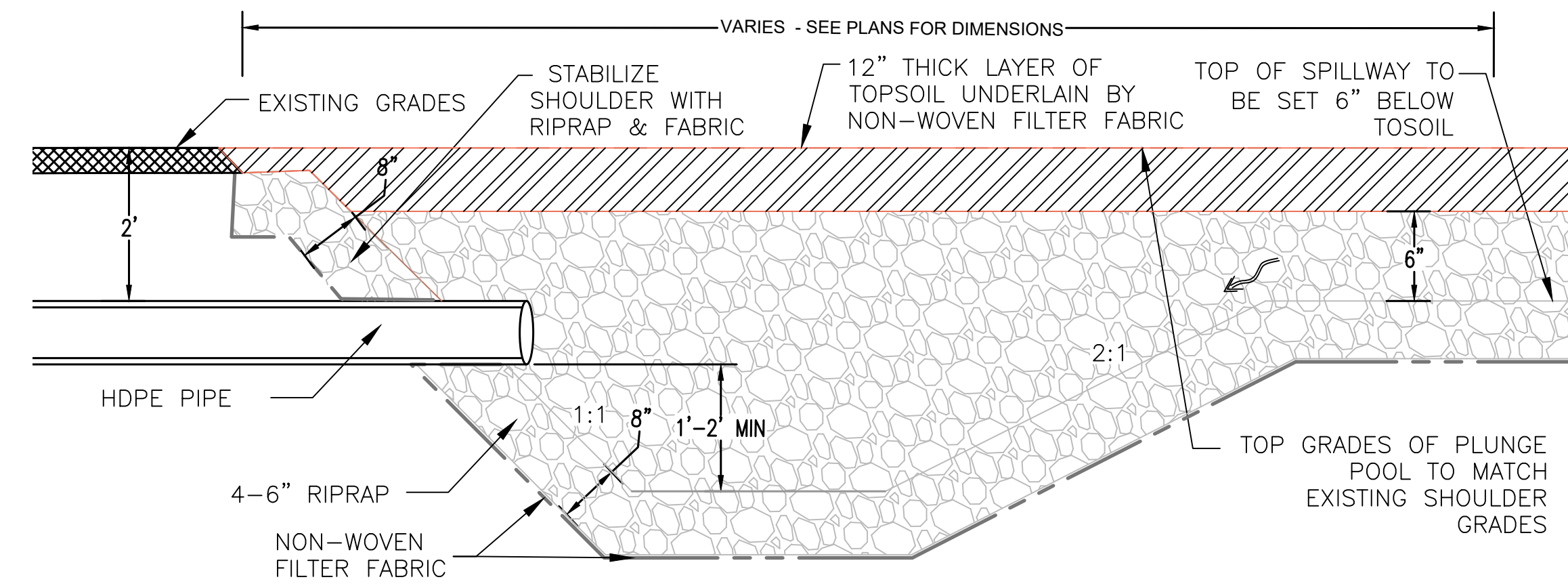
COMPREHENSIVE ENVIRONMENTAL
INCORPORATED

21 Depot Street
MERRIMACK, NH 03054

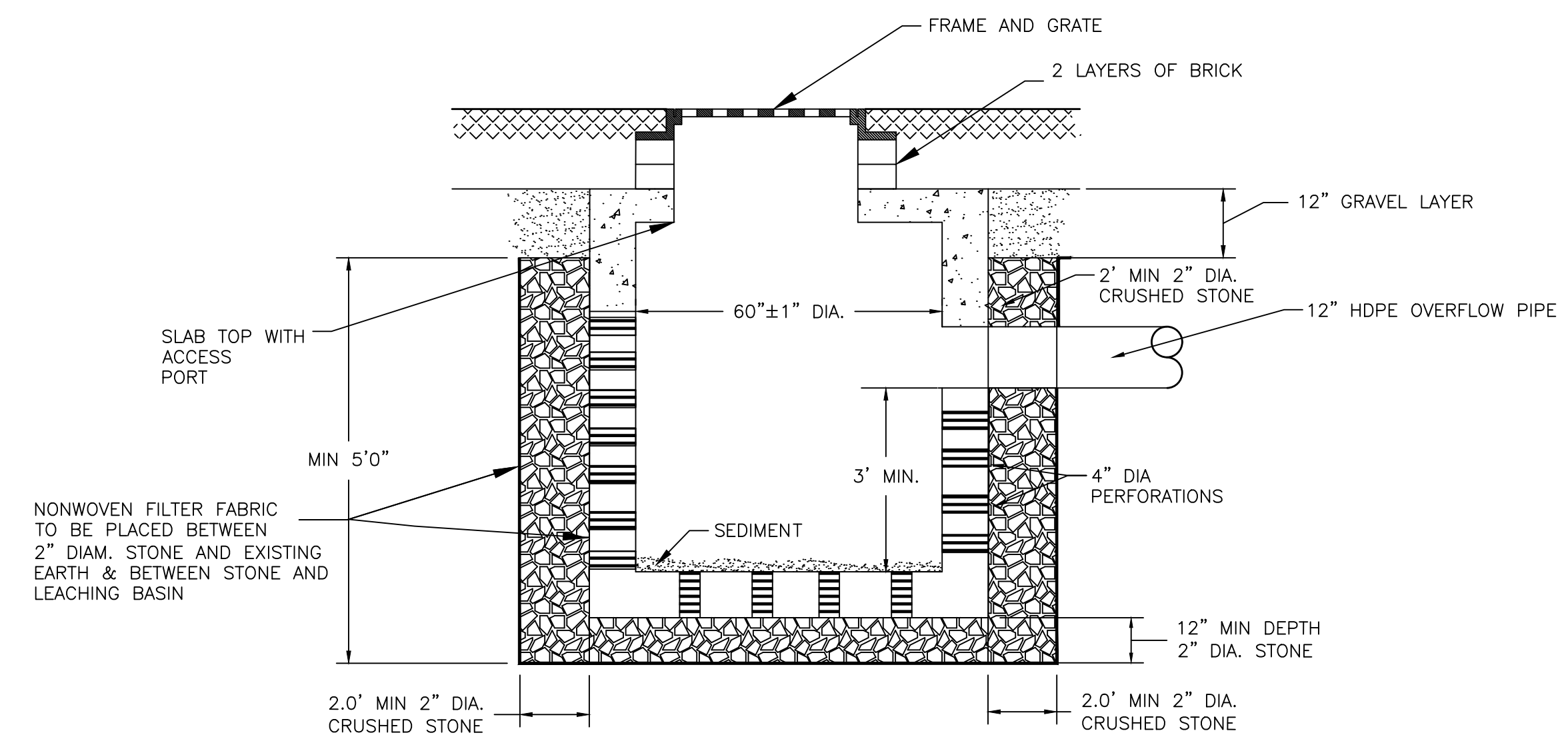
EROSION CONTROL
DETAILS

Town of Wolfeboro, NH

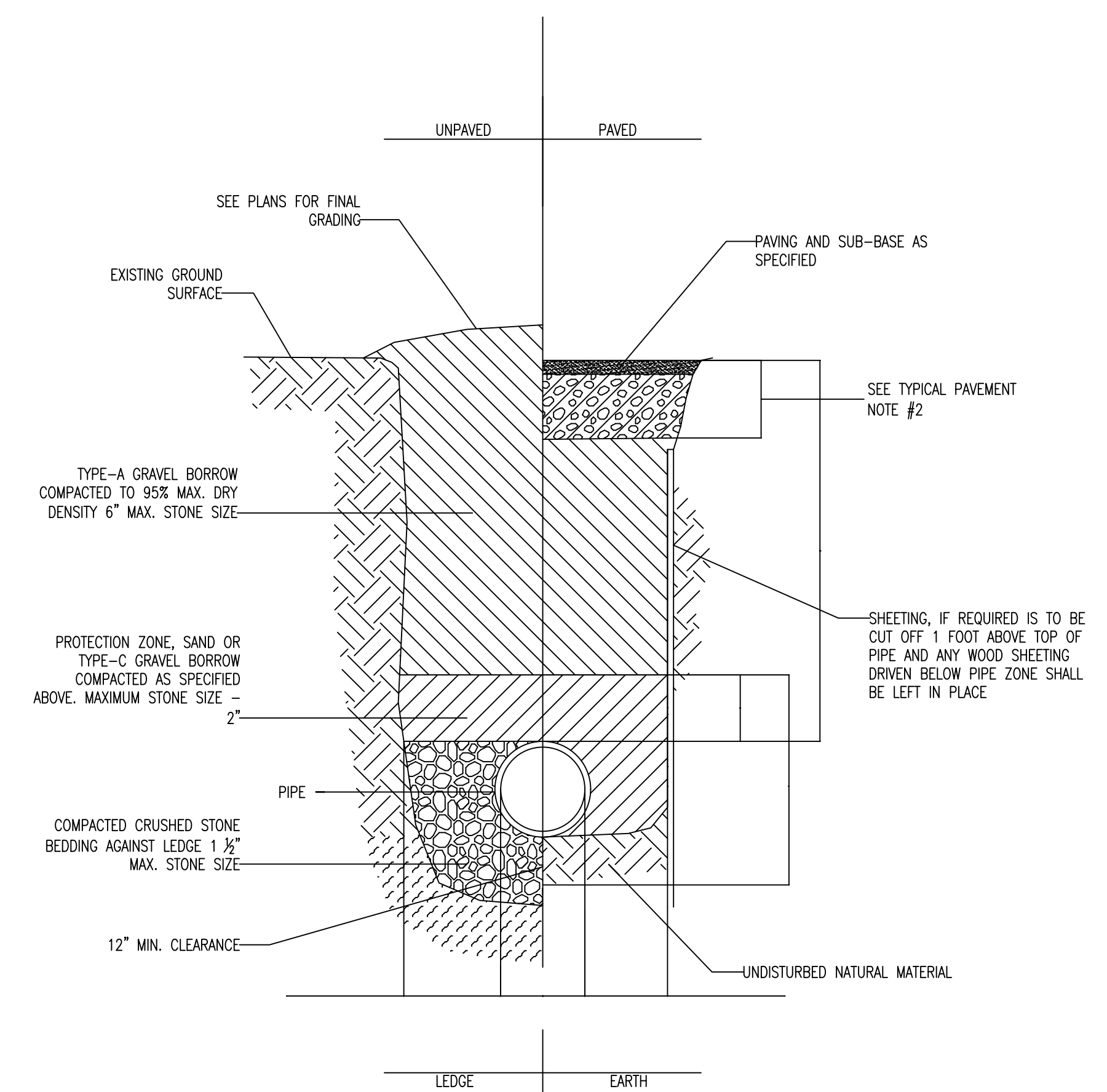
Project No.: 219-13	Sheet
Date: 9/25/2018	D-1
Drawn By: NBS	
Checked By: BL	
Scale: AS NOTED	



SUBSURFACE PLUNGE POOL DETAIL
 NOT TO SCALE



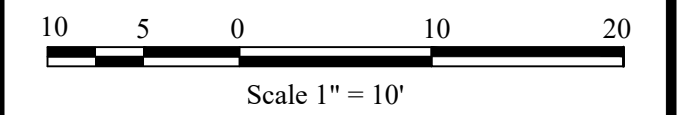
LEACHING CATCH BASIN TYP. DETAIL
 NOT TO SCALE



NOTE:
 1. GRAVEL BORROW SHALL CONFORM TO MASS HIGHWAY SPECIFICATION M1.03.0
 2. CRUSHED STONE BEDDING SHALL CONFORM TO MASS HIGHWAY SPECIFICATION M2.01.1

PIPE TRENCH TYP. DETAIL
 NOT TO SCALE

GENERAL NOTES



No.	Revision/Issue	Date

COMPREHENSIVE ENVIRONMENTAL INCORPORATED

21 Depot Street
 MERRIMACK, NH 03054

PROJECT DETAILS

Town of Wolfeboro, NH

Project No.: 219-15	Sheet
Date: 4/5/2021	D-2
Drawn By: NBS	
Checked By: ML	
Scale: AS NOTED	