

Bacteria Source Tracking Workshop: Methods for Identifying Illicit Discharges in your Town

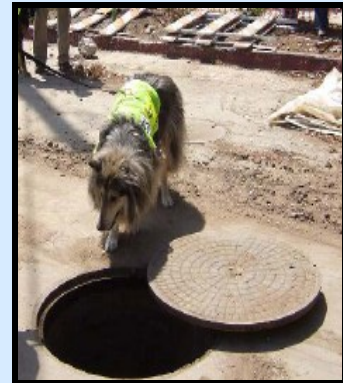


DATE: Wednesday, August 8th, 2012 8:30 - noon

LOCATION: NHDES Coastal Office
Pease International Tradeport
222 International Drive, Suite 175
Portsmouth, NH 03801

Workshop will Include:

- Presentations on methods to identify illicit discharges in your town including Canine Scent Detection, Microbial Source Tracking, bacteria sampling, camera inspection, and more.
- A panel discussion with representatives from the US EPA and ME and NH municipalities with information on the new draft permit requirements for IDDE and town examples of how they have addressed IDDE.
- Demonstrations of the dogs at work and of a camera inspection.



Space is limited to 60 participants. Please RSVP by August 3.



Environmental Canine Services LLC
Protecting Our Precious Resources With Natures Gift



Please RSVP to
Emily DiFranco
FB Environmental Associates
emilyd@fbenvironmental.com
(603) 343-6311

To NH Department of Environmental Services Coastal Offices at Pease International Tradeport

FROM THE SOUTH:

Via I-95

Take Exit 4 for "Spaulding Turnpike, Rt. 4 and Rte. 16, NH Lakes, White Mountains" which exits to the LEFT. This will take you directly onto north Rte. 16/Spaulding Turnpike towards Newington and Dover. Follow the Spaulding Turnpike /Route 16 northbound and take Exit 1, Pease Int'l Tradeport. Turn left at the bottom of the Exit 1 ramp. Cross under the Spaulding Turnpike, stay to the two right lanes. You are now on the northern entrance road (Pease Boulevard) to Pease Int'l Tradeport. Then follow directions at bottom of page.

Via Spaulding Turnpike/State Route 16 OR from the Portsmouth Traffic Circle

Follow the Spaulding Turnpike /Route 16 northbound and exit at Exit 1, Pease Int'l Tradeport. Turn left at the bottom of the Exit 1 ramp. Cross under the Spaulding Turnpike, you are now at the Pease Int'l. Tradeport

FROM THE NORTH:

Via I-95

Follow Interstate 95 southbound and exit at Exit 5. This will bring you directly onto the Spaulding Turnpike/Rte 16. Take Exit 1. Turn left at the bottom of the Exit 1 ramp. Cross under the Spaulding Turnpike. Stay to the right two lanes. You are now on the northern entrance road (Pease Boulevard) to Pease Int'l Tradeport.

Via the Spaulding Turnpike (State Route 16)

Follow the Spaulding Turnpike/Route 16 southbound and exit at Exit 1, Pease Int'l Tradeport. Turn right at the bottom of the Exit 1 ramp. You are now on the northern entrance road (Pease Boulevard) to Pease Int'l Tradeport.

ONCE INSIDE THE PEASE TRADEPORT.

Go to the first set of traffic lights and take a left. Go a short distance past the TD Bank to a large 4 way intersection. After stopping continue straight through the intersection and travel 1 mile. See 222 International Drive, white building on the right. The DES office is in Suite 175, on the west side of the building.

