

**Impacts of Proposed Elimination of Lake and River Water Quality Management & Monitoring at  
New Hampshire Department of Environmental Services (NHDES)**

**General Fund Staffing Analysis**

When NHDES was created in 1987, six general-funded positions conducted lake and river water quality management and monitoring. Since then, the legislature created 5 new programs to meet the need for increased water quality monitoring and management, yet general funding staffing has only increased by three full time positions. The N.H. House budget for 2012-2013 would reduce the number of general funded positions in the watershed management bureau from eight to two.

**Impact of Proposed Budget Reductions**

If the budget adopted by the N.H. House budget were to become law, effective July 1, 2011 the following **5 water quality management and monitoring programs would cease in addition to other DES program reductions.**

**Volunteer Lake & River Assessment Programs (VLAP RSA 487:31-33 & VRAP RSA 487:38-42)**

- In recent years VLAP and VRAP have supported 215 groups with a total of 1,500 lake, river and stream stations being monitored and over 24,000 individual sample results generated annually. Over 700 volunteers participate in these programs representing over 4,300 hours of volunteer time annually. In 2010 the value of the volunteer time was \$86,000. Since 1985, volunteers have contributed over \$900,000 in in-kind services.
- Support for and coordination of volunteer monitors, who rely on DES to supply equipment, training, and reporting, would cease. Over 40% of the surface water quality assessments of lakes and rivers included in the EPA required 2010 303(b) surface water quality report were provided by VRAP and VLAP volunteers. These data contributed to the assessment of 2,024 miles of river and over 300 lakes.
- The elimination of the VLAP and VRAP programs would result in over \$75,000 of lost fees for the state water lab

**Lakes & Rivers Management Programs (LMPP RSA 483-A & RMPP RSA 483)**

- Protects human health and safety and economic benefit by being the only formal state mechanism for municipalities to collaborate on source water protection and hazard mitigation strategies. Supports local and state collaborations to provide sustainable, clean public drinking water supplies and a reduction in loss of life and property from inundation and erosion, and protects the economic values of the swimming, fishing, and boating uses of N.H.'s surface waters.
- State administrative and technical support for 20 designated rivers would be lost, including the 135 miles of new designated rivers, with unanimous municipal support by 19 communities, under consideration by the Legislature in 2011.
- State administrative and technical support for Local River Advisory Committees (LACs) and the 118 communities they represent would end. LAC volunteer time is estimated at \$200,000 per year.
- Lake Management Plans from the 32 existing Comprehensive Lake Inventories would not be accomplished.

**Freshwater Beach Inspection Program (RSA 485-A:26 Safety Regulations)**

- Inspections by DES at 158 public beaches would cease. In 2010, DES conducted 652 inspections and issued 58 beach closure advisories based on the presence of e-coli or other bacteria, and 12 cyanobacteria advisories.

**Position Numbers & Titles (Eliminated in HB 1-A as amended)**

<b>Position</b>	<b>Title</b>	<b>Provides Support to General Public &amp; Municipalities and:</b>
40497	Executive Secretary	All Watershed Management Bureau programs
40143	Lakes Management & Protection Program Manager	Lakes Management Advisory Committee (LMAC) Lake Associations
18864	Rivers Management & Protection Program Manager	Rivers Management Advisory Committee (RMAC) Local River Advisory Committees (LACs)
42149	Principal Planner	LMPP and RMPP/LACs -LMAC and RMAC
41638	Volunteer River Assessment Program Coordinator	30 water quality monitoring groups and 200 volunteers
12073	Biologist	All Watershed Management Bureau monitoring programs

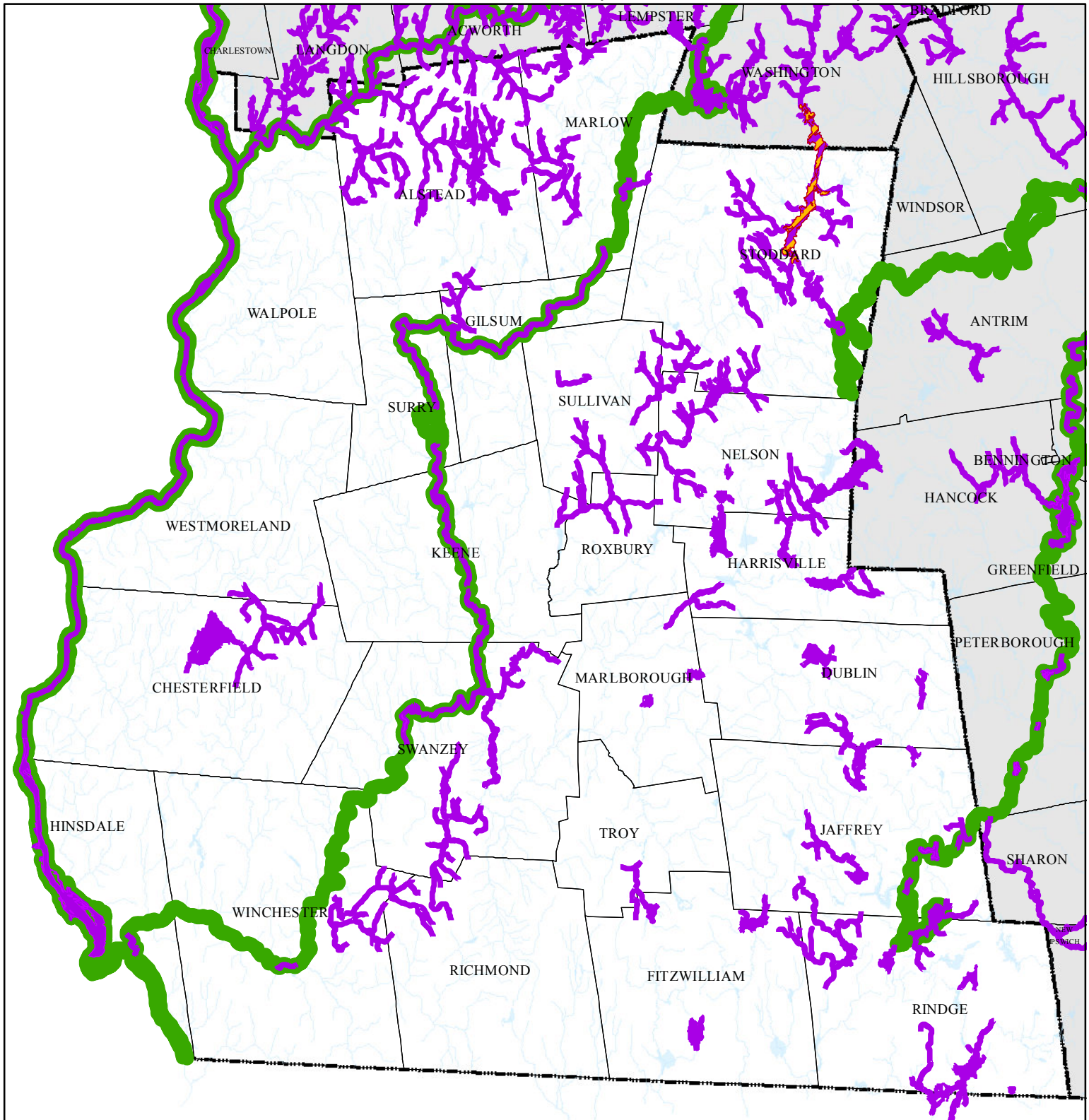
**Cheshire County - DES Coordinated Lake and River Water Quality Management & Monitoring**






<b>Program</b>	<b>Number of Municipalities with activities coordinated by DES</b>	<b>Waterbodies</b>
Lakes & Rivers Management Programs	15	Ashuelot, Cold, Connecticut, Contoocook, & North Branch Rivers. Highland Lake.
Volunteer Lakes & Rivers Monitoring Programs	21	Sand Pond, Highland Lake, Island Pond, Center Pond, Granite Lake, Warren Lake, Chapman Pond, Nubanusit Lake, Tolman Pond, Harrisville Pond, Russell Reservoir, Silver Lake, Skatutakee Lake, Dublin Pond, Howe Reservoir, Stone Pond, Swanzey Lake, Wilson Pond, Spofford Lake, Forest Lake, Laurel Lake, Rockwood Pond, Contoocook Lake, Frost Pond, Gilmore Pond, Thorndike Pond, Pearly Pond, Pool Pond, Monomonac Lake, Emerson Pond. Ashuelot, Cold, & Contoocook Rivers

*The elimination of these programs would eliminate programmatic outreach and assistance provided to towns, citizens, businesses, private sector interests and other state agencies pertaining to the management and monitoring of our lakes and rivers. The implementation of all these programs directly or indirectly protects public health.*

# DES Coordinated Volunteer Watershed Management Efforts in Cheshire County

*New Hampshire's lakes and rivers attract visitors, generate spending, create jobs and household income, and boost tax revenue. According to a 2003 study, uses of our lakes and rivers contribute \$1.8B annually to the state's economy.*



-  Comprehensive Lake Inventories
-  Volunteer Monitored Waters
-  Rivers Management & Protection Program
-  Other Waters
-  County Boundaries

Prepared by  
  
 NEW HAMPSHIRE  
 DEPARTMENT OF  
**Environmental Services**  
 April 2011