

Local Advisory Committee (LAC) Newsletter - 2018

EVENTS

Save the Date – LAC Workshop on Saturday, March 23, 2019

Come learn and network with other LAC members and your Rivers Management Protection Program (RMPP) partners on March 23, 2019. This full-day event is a terrific opportunity to share your knowledge and experiences with other LAC members throughout New Hampshire. The workshop will be held at the NHDES Offices at 29 Hazen Drive in Concord. Stay tuned for more information, and we strongly encourage you to reach out to Tracie, Kathy, or Mariah if you have suggested workshop topics. We would love to have your input!

NEWS and PROGRAM UPDATES

Welcome and Congratulations to RMPP Staff!

The Rivers Program is growing... in addition to the newly designated Warner River (flowing through Bradford, Warner, Sutton, Webster and Hopkinton), we have two new staff members as well as a familiar staff member taking on new responsibilities:

- 💧 Kathy Black is our new, full-time Watershed Coordinator. She will be implementing projects for the Rivers Program, and also helping Wayne Ives (Instream Flow Specialist) as the Instream Flow Program is now being implemented on all 19 of our designated rivers.
- 💧 Mariah Mitchell has joined us as the part-time Rivers and Lakes Programs Assistant, transitioning from her internship in the Exotic Aquatic Weeds Program here at NHDES. You will be seeing many emails from Mariah for permit notifications, membership, and legislative updates.
- 💧 Elijah Herman is the part-time Instream Flow Program Assistant, supporting Wayne Ives as the program continues to grow. Eli can most often be found wading in streams to install or remove water temperature loggers, or in front of the computer using Geographic Information System (GIS) software to create maps and run detailed spatial analyses.

LAC Member Recruitment – Now Underway!

Now that the RMPP is fully staffed, we are in a position to support those LACs in need of additional members. As we begin the recruitment process for each river, we will reach out to the LAC chair to confirm membership needs and find out what you have been working on lately in order to highlight that information in our letters to the town selectmen, planning boards, and conservation commissions.

Instream Flow Program

Although you have already received several emails recently about the Instream Flow Program, we wanted to provide the following summary and links to resources for your convenience:

- 💧 [Target Fish Community Reports](#) are available for each river.
- 💧 [QPPQ Stream Flow Estimation Method Report](#) has been published.
- 💧 The public hearing on the [Instream Flow Program rules Initial Proposal](#) will be held November 15, 2018 at 9:00 am at the NHDES Offices in Concord. Comments are due by November 26, 2018.
- 💧 The public hearing on the [Prioritization for Instream Flow Implementation](#) will be held on November 26, 2018 at 5:30 pm at the NHDES Offices in Concord. Comments are due by December 7, 2018.

FUNDING

New Hampshire Clean Water State Revolving Fund Loan Program

New in 2018 is principal forgiveness for Clean Water State Revolving Fund (CWSRF) loans of up to \$75,000 for stormwater planning evaluations. There may be potential that this funding could be used for new or updated corridor management plans containing stormwater components. Contact Deb Loiselle, Stormwater Coordinator at Deborah.Loiselle@des.nh.gov or 603-271-1352 for more information.

604(b) Water Quality Planning Grants

The 604(b) Water Quality Planning Grants available to regional planning commissions and the Connecticut River Joint Commission are planning grants that in past years have funded river corridor management plans and updates. Several years ago, these grants went to a 2-year funding cycle, but they are once again available every year. While the current funding cycle is closed, the next grant cycle will open during the summer of 2019. More information is available at:

<https://www.des.nh.gov/organization/divisions/water/wmb/was/categories/grants.htm>.

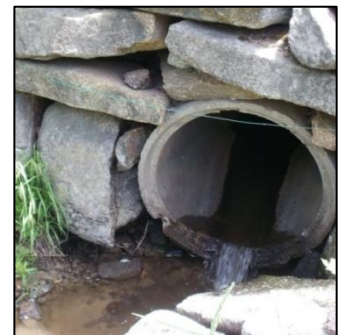
INFORMATION, MAPS and TOOLS

Urbanized Shoreland Exemption Area Interactive Mapping Tool

The Shoreland Program recently published an interactive mapping tool to help the public, contractors and municipalities understand the Shoreland Urbanized Exemption Areas. It uses parcel and stream data to highlight areas that are exempt from the Shoreland Protection Act. The web map can be accessed at: <http://nhdes.maps.arcgis.com/apps/webappviewer/index.html?id=6d576ab97a7a49ceb5ea427243b95761>.

Stream Crossing Restoration Web Mapper

This map can be used to explore stream crossing data in your communities and identify candidate culverts for replacement and upgrades. Data included includes the structure's compatibility with river processes (geomorphic compatibility) and its ability to pass aquatic organisms. The web map can be found at: <http://nhdes.maps.arcgis.com/apps/webappviewer/index.html?id=21173c9556be4c52bc20ea706e1c9f5a>.



Links to Public Access Site Information

Our partners at the New Hampshire Fish and Game Department have assembled a list of online sources for information about public access sites to our rivers and lakes. All of these sources are available to the general public, and are a good resource for the LAC's own work as well as to answer questions you may receive about fishing or boat access to your river. The document is posted on the LAC Forum at: <https://www4.des.state.nh.us/blogs/rivers/wp-content/uploads/Public-Access-Info-Links.pdf>.

NH Watershed Protection and Restoration Forum

The Watershed Protection and Restoration Forum is a blog site hosted by NHDES that focuses on sharing information about events, opportunities, grants, and research relevant to protecting New Hampshire's rivers, lakes, wetlands, and estuaries. The site is open to the public at <https://www4.des.state.nh.us/blogs/watershed/>, and you can email barbara.mcmillan@des.nh.gov to request that your email be added to the forum distribution list or for permission to post content.

Buffer Options for the Bay

For our coastal region LACs, a team of scientists, practitioners and program managers have created a website called Buffer Options for the Bay. The site contains information and resources on what buffers are, how they work, and how to work with stakeholders to promote them. Please visit <https://www.bufferoptionsnh.org/> to learn more.



Federal Emergency Management Agency (FEMA) Map Updates

For the latest information on FEMA flood mapping projects underway in New Hampshire, visit the Current NH Floodplain Mapping Activities webpage (<https://www.nh.gov/osi/planning/programs/fmp/current-map-projects.htm>). You can also view the interactive map showing project locations at: <https://www.arcgis.com/home/webmap/viewer.html?webmap=efac267c2de24290b621d19a1e8ac391>.

Free GIS Application: QGIS

One of the most popular free and open source GIS software applications is called [QGIS](#). Like other GIS software, you can make maps, create and edit datasets, and analyze geospatial data. If you're already a GIS user, it is not difficult to learn and there are many free, online tutorials out there to get you started. It also works with both Windows and Mac operating systems.

IDEAS

Making Your Community Forest-Friendly: A Worksheet for Review of Municipal Codes and Ordinances

The Center for Watershed Protection has designed a worksheet to help communities (or LACs!) review and revise their development regulations so future projects conserve and protect valuable trees and woodlands and encourage new plantings. It provides a set of questions to help determine whether existing local codes require, allow or prohibit "forest-friendly" development practices. The document also provides additional resources, ideas and guidance for developing a community forestry program: <https://owl.cwp.org/mdocs-posts/making-your-community-forest-friendly-a-worksheet-for-review-of-municipal-codes-and-ordinances/>.

River and Tributary Stream Signs

The Souhegan River LAC (SoRLAC) is undertaking a project to not only identify and indicate as protected all of the road crossings over the designated Souhegan River, but also to label many of the tributary streams that feed the Souhegan. Working with SoRLAC and the Souhegan Watershed Association, the Town of Merrimack has put identification signs adjacent to all the river and brook crossings in town. Other towns in the watershed are following Merrimack's lead to further watershed awareness. In the Souhegan River watershed, the tributary signs are similar in design to street signs but with the colors reversed.

Share Your Events, Workshops and Photos with NHDES

NHDES is eager to promote LAC-hosted workshops, cleanups, publications and activities with our 5000+ followers on [Facebook](#), [Twitter](#) (@NHDES), and [YouTube](#). We would also love to share your photos of your river with other New Hampshire residents, such as the one here taken by Contoocook River LAC member John Haley. Send photos and event fliers to Tracie.Sales@des.nh.gov, Kathryn.Black@des.nh.gov, or Mariah.Mitchell@des.nh.gov.

