

Table A-13a
 Alternate Water Designation
 Parcel Summary: Point-of-Entry (POET) Systems

ID ¹	Town	Street Name	Street Number	Map	Block	Lot	SLUC	BW Number	POET System
AW-13001	Londonderry	Lorraine Dr	7	005	050	28	11	BW-01061	X
AW-13002	Londonderry	Priscilla Ln	8	002	027	27	11	BW-01060	X

Notes

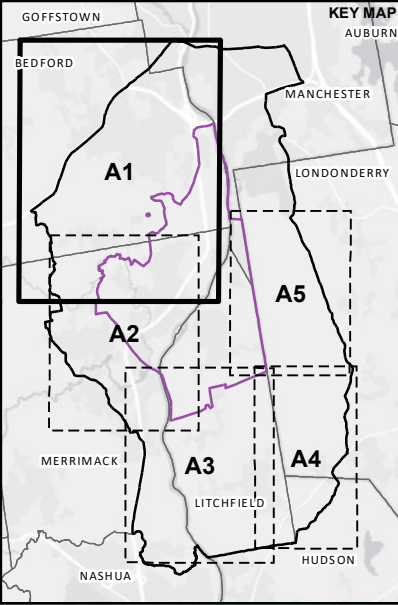
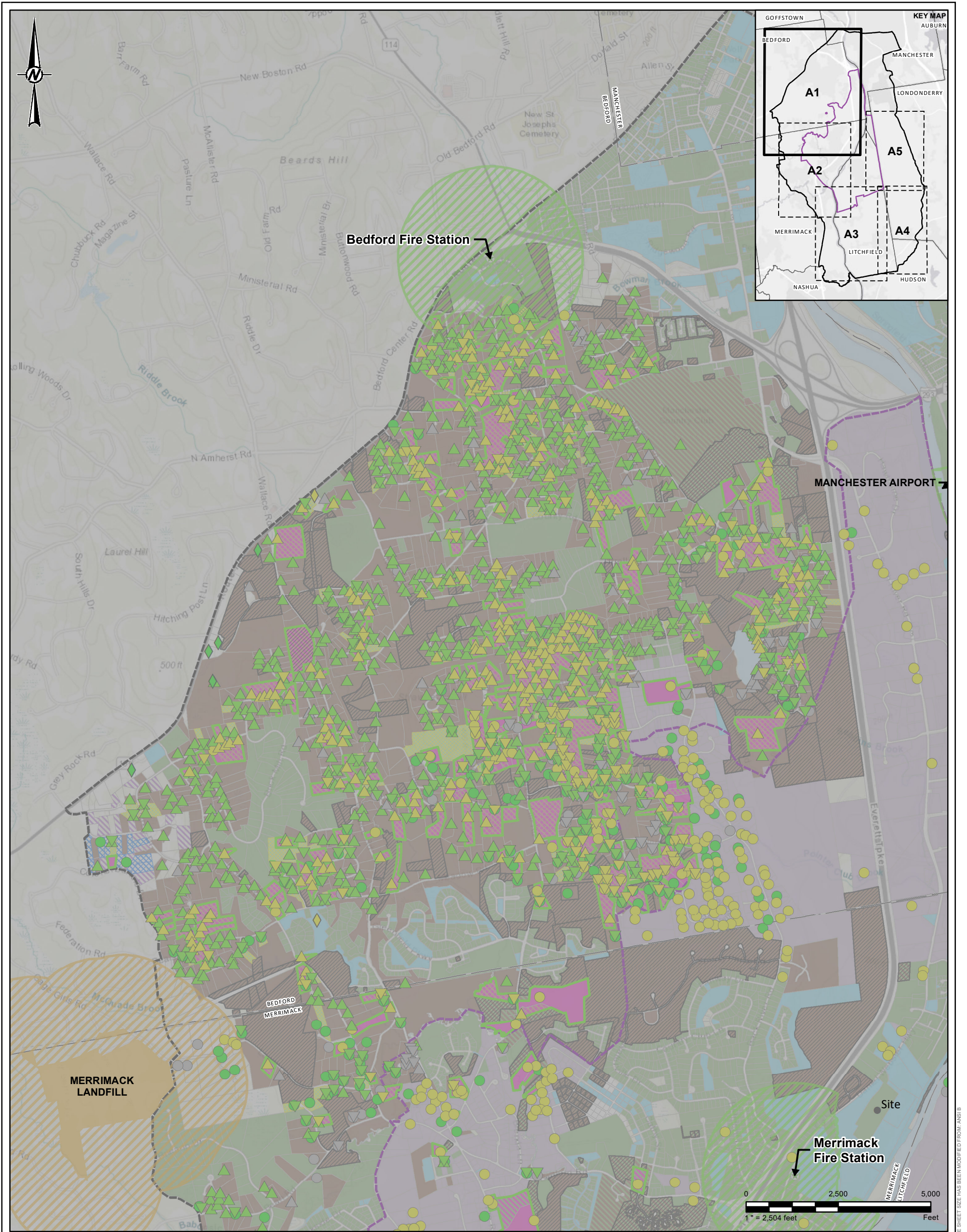
1) Alternate water status based on results through March 3, 2023.

Table A-13b
 Alternate Water Designation
 Parcel Summary: Public Water Supply Service Connections

ID ¹	Town	Street Name	Street Number	Map	Block	Lot	SLUC	BW Number	Connection to Existing Water Main
AW-13003	Merrimack	Turkey Hill Rd	18	05C	0	0606	11	BW-01063	X

Notes

1) Alternate water status based on results through March 3, 2023.



- Alternate Water Assigned in a Separate Attachment
- Saint-Gobain Merrimack Facility
- Pre-GMZ Boundary (see Note 1)
- Outer Boundary (see Note 1)
- Town Boundary
- NHDES Sample Location
- WSP Sample Location
- WSP Resample Location
- PWS Sample Location
- Non-detect
- ≤12 ppt
- >12 ppt
- Identified for Resampling - Addendum 17
- Identified for Resampling - Prior Addendum
- Identified for Sampling or Confirmation of Water Supply Status
- Properties not Currently Eligible for Sampling
- Confirmed Connection to PWS
- Properties Identified to be Sampled by NHDES
- Occupants have been Offered Bottled Water
- Identified for Sampling Where Occupants have been Offered Bottled Water
- Identified for Sampling or Confirmation of Water Supply Status
- Access to Alternate Water (if applicable) confirmed by Consent Decree

- Connection to PWS Confirmed
- Access to Water Main is Likely
- Access to Water Mains is not Likely
- Potential Other Sources
- Fire Stations 2500 ft Buffer
- Airport Potential Source Boundary
- Landfill Boundary 2000 ft Buffer
- Landfill - Approximate GMZ Boundary Before AGQS Revision

NOTE(S)
1. PRE-GMZ BOUNDARY AND OUTER BOUNDARY FROM ATTACHMENT C OF CONSENT DECREE, STATE OF NEW HAMPSHIRE, DEPT. OF ENVIRONMENTAL SERVICES V. SAINT-GOBAIN PERFORMANCE PLASTICS CORPORATION, MARCH 20, 2018.
2. BOTTLED WATER STATUS BASED ON RESULTS RECEIVED THROUGH FEBRUARY 20, 2023.
3. PFOA DATASET INCLUDES DATA RECEIVED AS OF JANUARY 31, 2023, AND DATA PROVIDED BY NHDES ON AUGUST 31, 2022.
4. MOST RECENT DATA FOR EACH LOCATION IS SHOWN. IF MULTIPLE SAMPLES WERE TAKEN ON THE SAME DATE, THE SAMPLE WITH THE HIGHEST VALUE IS SHOWN.
5. PUBLIC WATER SUPPLY (PWS) LOCATIONS AND DATA PROVIDED BY NHDES ON APRIL 21, 2021.

REFERENCE(S)
1. COORDINATE SYSTEM: NAD 1983 STATEPLANE NEW HAMPSHIRE FIPS 2600 FEET
2. BASEMAP ESRI, HERE, GARMIN, (C) OPENSTREETMAP CONTRIBUTORS, AND THE GIS USER COMMUNITY
SOURCES: ESRI, HERE, GARMIN, INTERMAP, INCREMENT P CORP., GEBCO, USGS, FAO, NPS, NRCAN, GEOBASE, IGN, KADASTER NL, ORDNANCE SURVEY, ESRI JAPAN, METI, ESRI CHINA (HONG KONG), (C) OPENSTREETMAP CONTRIBUTORS, AND THE GIS USER COMMUNITY

CLIENT

SAINT-GOBAIN PERFORMANCE PLASTICS

PROJECT

RESIDENTIAL WELL WORK PLAN - RESIDENTIAL WELL SAMPLING

SAINT-GOBAIN PERFORMANCE PLASTICS FACILITY

TITLE

ANALYTICAL RESULTS SUMMARY

ATTACHMENT 13 - ALTERNATE WATER DESIGNATION AREA 1

CONSULTANT

YYYY-MM-DD

2023-05-02

DESIGNED

RWB

PREPARED


SHL

REVIEWED

BDL

APPROVED

RWB



PROJECT NO.

CONTROL

REV.

FIGURE

1668623

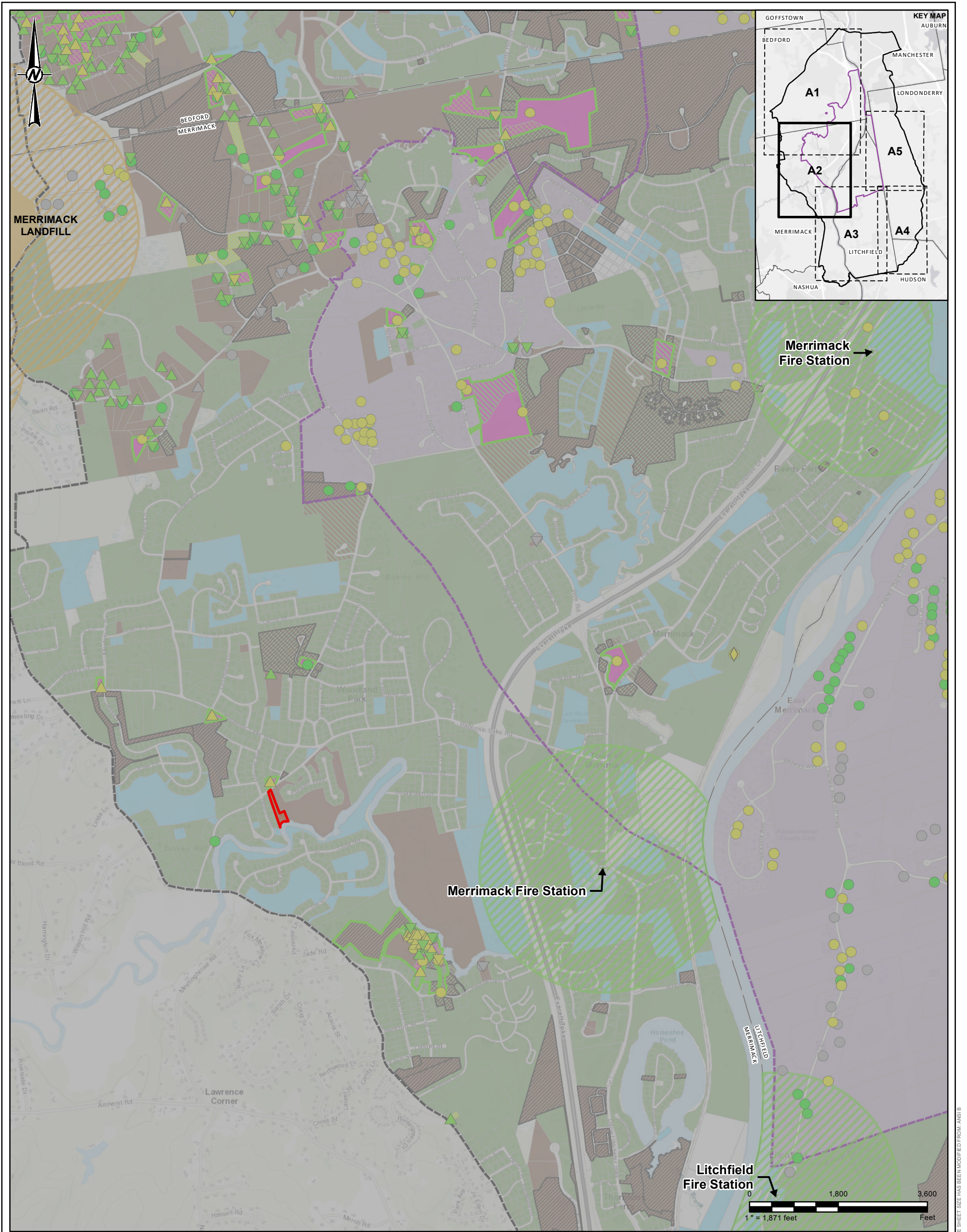
-

-

A1



IF THIS MEASUREMENT DOES NOT MATCH WHAT IS SHOWN, THE SHEET SIZE HAS BEEN MODIFIED FROM: ANSI 8 1/2 x 11 in



- Attachment 13 Alternate Water Parcel
- Alternate Water Assigned in a Separate Attachment
- Pre-GMZ Boundary (see Note 1)
- Outer Boundary (see Note 1)
- Town Boundary
- NHDES Sample Location
- WSP Sample Location
- WSP Resample Location
- PWS Sample Location
- Non-detect
- ≤12 ppt
- >12 ppt
- Identified for Resampling - Prior Addendum
- Properties not Currently Eligible for Sampling
- Confirmed Connection to PWS
- Occupants have been Offered Bottled Water
- Identified for Sampling Where Occupants have been Offered Bottled Water
- Identified for Sampling or Confirmation of Water Supply Status
- Access to Alternate Water (if applicable) confirmed by Consent Decree
- Connection to PWS Confirmed
- Access to Water Main is Likely
- Access to Water Mains is not Likely

- Potential Other Sources
- Fire Stations 2500 ft Buffer
- Landfill Boundary 2000 ft Buffer
- Landfill - Approximate GMZ Boundary Before AGQS Revision

NOTE(S)
1. PRE-GMZ BOUNDARY AND OUTER BOUNDARY FROM ATTACHMENT C OF CONSENT DECREE, STATE OF NEW HAMPSHIRE, DEPT. OF ENVIRONMENTAL SERVICES V. SAINT-GOBAIN PERFORMANCE PLASTICS CORPORATION, MARCH 20, 2018.
2. BOTTLED WATER STATUS BASED ON RESULTS RECEIVED THROUGH FEBRUARY 20, 2023.
3. PFOA DATASET INCLUDES DATA RECEIVED AS OF JANUARY 31, 2023, AND DATA PROVIDED BY NHDES ON AUGUST 31, 2022.
4. MOST RECENT DATA FOR EACH LOCATION IS SHOWN. IF MULTIPLE SAMPLES WERE TAKEN ON THE SAME DATE, THE SAMPLE WITH THE HIGHEST VALUE IS SHOWN.
5. PUBLIC WATER SUPPLY (PWS) LOCATIONS AND DATA PROVIDED BY NHDES ON APRIL 21, 2021.

REFERENCE(S)
1. COORDINATE SYSTEM: NAD 1983 STATEPLANE NEW HAMPSHIRE FIPS 2600 FEET
2. BASEMAP ESRI, HERE, GARMIN, (C) OPENSTREETMAP CONTRIBUTORS, AND THE GIS USER COMMUNITY
SOURCES: ESRI, HERE, GARMIN, INTERMAP, INCREMENT P CORP., GEBCO, USGS, FAO, NPS, NRCAN, GEOBASE, IGN, KADASTER NL, ORDNANCE SURVEY, ESRI JAPAN, METI, ESRI CHINA (HONG KONG), (C) OPENSTREETMAP CONTRIBUTORS, AND THE GIS USER COMMUNITY

CLIENT

SAINT-GOBAIN PERFORMANCE PLASTICS

PROJECT
RESIDENTIAL WELL WORK PLAN - RESIDENTIAL WELL
SAMPLING
SAINT-GOBAIN PERFORMANCE PLASTICS FACILITY

TITLE
**ANALYTICAL RESULTS SUMMARY
ATTACHMENT 13 - ALTERNATE WATER DESIGNATION
AREA 2**

CONSULTANT



PROJECT NO.
1668623

CONTROL

REV.

FIGURE
A2

YYYY-MM-DD	2023-05-02
DESIGNED	RWB
PREPARED	SHL
REVIEWED	BDL
APPROVED	RWB



- Alternate Water Assigned in a Separate Attachment
- Pre-GMZ Boundary (see Note 1)
- Outer Boundary (see Note 1)
- Town Boundary
- NHDES Sample Location
- WSP Sample Location
- WSP Resample Location
- PWS Sample Location
- Non-detect
- ≤12 ppt
- >12 ppt
- Identified for Resampling - Prior Addendum
- Properties not Currently Eligible for Sampling
- Confirmed Connection to PWS
- Occupants have been Offered Bottled Water
- Identified for Sampling Where Occupants have been Offered Bottled Water
- Identified for Sampling or Confirmation of Water Supply Status
- Access to Alternate Water (if applicable) confirmed by Consent Decree
- Connection to PWS Confirmed
- Access to Water Main is Likely
- Access to Water Mains is not Likely
- Potential Other Sources

- Fire Stations 2500 ft Buffer
- Landfill Boundary 2000 ft Buffer

NOTE(S)
1. PRE-GMZ BOUNDARY AND OUTER BOUNDARY FROM ATTACHMENT C OF CONSENT DECREE, STATE OF NEW HAMPSHIRE, DEPT. OF ENVIRONMENTAL SERVICES V. SAINT-GOBAIN PERFORMANCE PLASTICS CORPORATION, MARCH 20, 2018.
2. BOTTLED WATER STATUS BASED ON RESULTS RECEIVED THROUGH FEBRUARY 20, 2023.
3. PFOA DATASET INCLUDES DATA RECEIVED AS OF JANUARY 31, 2023, AND DATA PROVIDED BY NHDES ON AUGUST 31, 2022.
4. MOST RECENT DATA FOR EACH LOCATION IS SHOWN. IF MULTIPLE SAMPLES WERE TAKEN ON THE SAME DATE, THE SAMPLE WITH THE HIGHEST VALUE IS SHOWN.
5. PUBLIC WATER SUPPLY (PWS) LOCATIONS AND DATA PROVIDED BY NHDES ON APRIL 21, 2021.

REFERENCE(S)
1. COORDINATE SYSTEM: NAD 1983 STATEPLANE NEW HAMPSHIRE FIPS 2800 FEET
2. BASEMAP ESRI, HERE, GARMIN, (C) OPENSTREETMAP CONTRIBUTORS, AND THE GIS USER COMMUNITY
SOURCES: ESRI, HERE, GARMIN, INTERMAP, INCREMENT P CORP., GEBCO, USGS, FAO, NPS, NRCAN, GEOBASE, IGN, KADASTER NL, ORDNANCE SURVEY, ESRI JAPAN, METI, ESRI CHINA (HONG KONG), (C) OPENSTREETMAP CONTRIBUTORS, AND THE GIS USER COMMUNITY

CLIENT

SAINT-GOBAIN PERFORMANCE PLASTICS

PROJECT

RESIDENTIAL WELL WORK PLAN - RESIDENTIAL WELL SAMPLING

SAINT-GOBAIN PERFORMANCE PLASTICS FACILITY

TITLE

ANALYTICAL RESULTS SUMMARY

ATTACHMENT 13 - ALTERNATE WATER DESIGNATION AREA 3

CONSULTANT

YYYY-MM-DD

2023-05-02

DESIGNED

RWB

PREPARED


SHL

REVIEWED

BDL

APPROVED

RWB



PROJECT NO.

CONTROL

REV.

FIGURE

1668623

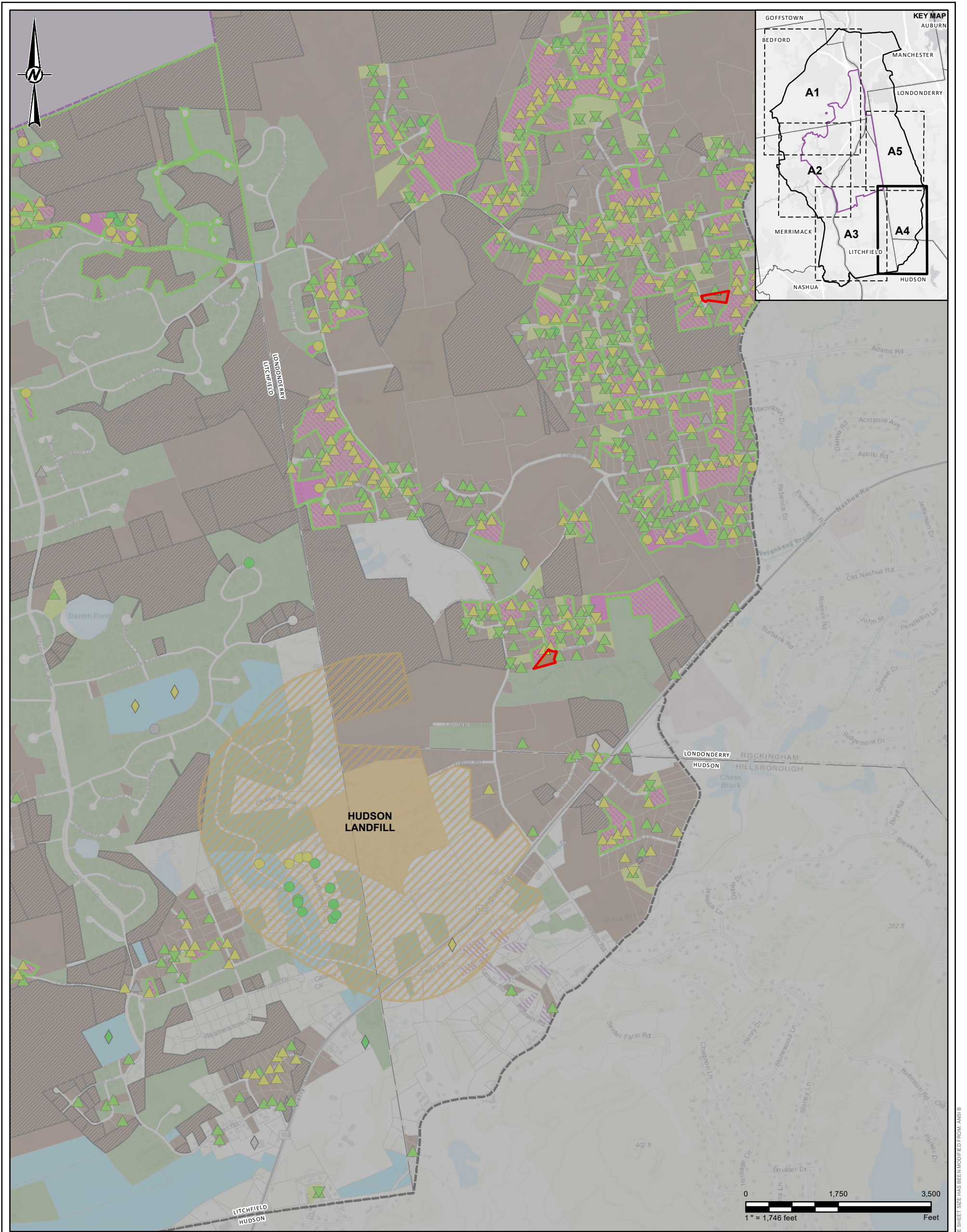
-

-

A3



IF THIS MEASUREMENT DOES NOT MATCH WHAT IS SHOWN, THE SHEET SIZE HAS BEEN MODIFIED FROM: ANSI B



- Attachment 13 Alternate Water Parcel
- Alternate Water Assigned in a Separate Attachment
- Pre-GMZ Boundary (see Note 1)
- Outer Boundary (see Note 1)
- Town Boundary
- NHDES Sample Location
- WSP Sample Location
- WSP Resample Location
- PWS Sample Location
- Non-detect
- ≤12 ppt
- >12 ppt
- Identified for Resampling - Addendum 17
- Identified for Resampling - Prior Addendum
- Properties not Currently Eligible for Sampling
- Confirmed Connection to PWS
- Properties Identified to be Sampled by NHDES
- Occupants have been Offered Bottled Water
- Identified for Sampling Where Occupants have been Offered Bottled Water
- Identified for Sampling or Confirmation of Water Supply Status
- Access to Alternate Water (if applicable) confirmed by Consent Decree
- Connection to PWS Confirmed

- Access to Water Main is Likely
- Access to Water Mains is not Likely
- Landfill Boundary 2000 ft Buffer
- Landfill - Approximate GMZ Boundary Before AGQS Revision

NOTE(S)
1. PRE-GMZ BOUNDARY AND OUTER BOUNDARY FROM ATTACHMENT C OF CONSENT DECREE, STATE OF NEW HAMPSHIRE, DEPT. OF ENVIRONMENTAL SERVICES V. SAINT-GOBAIN PERFORMANCE PLASTICS CORPORATION, MARCH 20, 2018.
2. BOTTLED WATER STATUS BASED ON RESULTS RECEIVED THROUGH FEBRUARY 20, 2023.
3. PFOA DATASET INCLUDES DATA RECEIVED AS OF JANUARY 31, 2023, AND DATA PROVIDED BY NHDES ON AUGUST 31, 2022.
4. MOST RECENT DATA FOR EACH LOCATION IS SHOWN. IF MULTIPLE SAMPLES WERE TAKEN ON THE SAME DATE, THE SAMPLE WITH THE HIGHEST VALUE IS SHOWN.
5. PUBLIC WATER SUPPLY (PWS) LOCATIONS AND DATA PROVIDED BY NHDES ON APRIL 21, 2021.

REFERENCE(S)
1. COORDINATE SYSTEM: NAD 1983 STATEPLANE NEW HAMPSHIRE FIPS 2600 FEET
2. BASEMAP ESRI, HERE, GARMIN, (C) OPENSTREETMAP CONTRIBUTORS, AND THE GIS USER COMMUNITY
SOURCES: ESRI, HERE, GARMIN, INTERMAP, INCREMENT P CORP., GEBCO, USGS, FAO, NPS, NRCAN, GEOBASE, IGN, KADASTER NL, ORDNANCE SURVEY, ESRI JAPAN, METI, ESRI CHINA (HONG KONG), (C) OPENSTREETMAP CONTRIBUTORS, AND THE GIS USER COMMUNITY

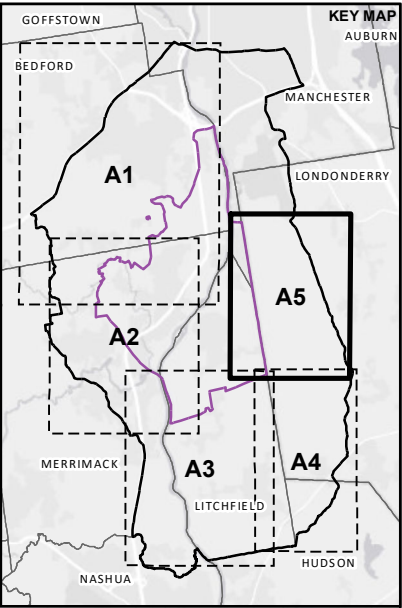
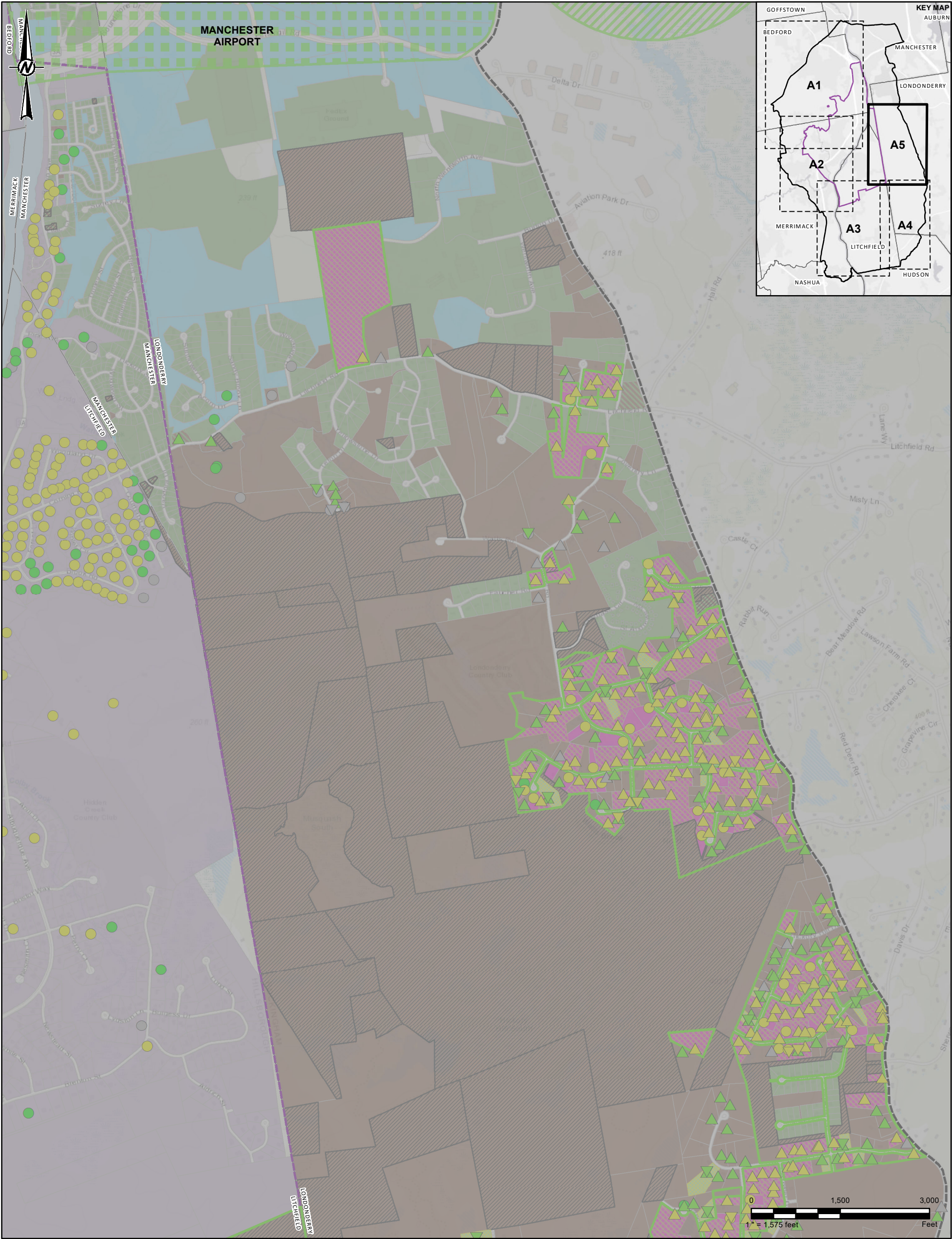
CLIENT
SAINT-GOBAIN PERFORMANCE PLASTICS

PROJECT
**RESIDENTIAL WELL WORK PLAN - RESIDENTIAL WELL SAMPLING
SAINT-GOBAIN PERFORMANCE PLASTICS FACILITY**
TITLE
**ANALYTICAL RESULTS SUMMARY
ATTACHMENT 13 - ALTERNATE WATER DESIGNATION
AREA 4**

CONSULTANT	YYYY-MM-DD	2023-05-02
	DESIGNED	RWB
	PREPARED	SHL
	REVIEWED	BDL
	APPROVED	RWB

PROJECT NO.	CONTROL	REV.	FIGURE
1668623	-	-	A4





- Alternate Water Assigned in a Separate Attachment
- Pre-GMZ Boundary (see Note 1)
- Outer Boundary (see Note 1)
- Town Boundary
- NHDES Sample Location
- WSP Sample Location
- WSP Resample Location
- PWS Sample Location
- Non-detect
- ≤12 ppt
- >12 ppt
- Identified for Resampling - Prior Addendum
- Properties not Currently Eligible for Sampling
- Confirmed Connection to PWS
- Occupants have been Offered Bottled Water
- Identified for Sampling Where Occupants have been Offered Bottled Water
- Identified for Sampling or Confirmation of Water Supply Status
- Access to Alternate Water (if applicable) confirmed by Consent Decree
- Connection to PWS Confirmed
- Access to Water Main is Likely
- Access to Water Mains is not Likely
- Fire Stations 2500 ft Buffer

Airport Potential Source Boundary

NOTE(S)
1. PRE-GMZ BOUNDARY AND OUTER BOUNDARY FROM ATTACHMENT C OF CONSENT DECREE, STATE OF NEW HAMPSHIRE, DEPT. OF ENVIRONMENTAL SERVICES V. SAINT-GOBAIN PERFORMANCE PLASTICS CORPORATION, MARCH 20, 2018.
2. BOTTLED WATER STATUS BASED ON RESULTS RECEIVED THROUGH FEBRUARY 20, 2023.
3. PFOA DATASET INCLUDES DATA RECEIVED AS OF JANUARY 31, 2023, AND DATA PROVIDED BY NHDES ON AUGUST 31, 2022.
4. MOST RECENT DATA FOR EACH LOCATION IS SHOWN. IF MULTIPLE SAMPLES WERE TAKEN ON THE SAME DATE, THE SAMPLE WITH THE HIGHEST VALUE IS SHOWN.
5. PUBLIC WATER SUPPLY (PWS) LOCATIONS AND DATA PROVIDED BY NHDES ON APRIL 21, 2021.

REFERENCE(S)
1. COORDINATE SYSTEM: NAD 1983 STATEPLANE NEW HAMPSHIRE FIPS 2600 FEET
2. BASEMAP ESRI, HERE, GARMIN, (C) OPENSTREETMAP CONTRIBUTORS, AND THE GIS USER COMMUNITY
SOURCES: ESRI, HERE, GARMIN, INTERMAP, INCREMENT P CORP., GEBCO, USGS, FAO, NPS, NRCAN, GEOBASE, IGN, KADASTER NL, ORDNANCE SURVEY, ESRI JAPAN, METI, ESRI CHINA (HONG KONG), (C) OPENSTREETMAP CONTRIBUTORS, AND THE GIS USER COMMUNITY

CLIENT

SAINT-GOBAIN PERFORMANCE PLASTICS

PROJECT
RESIDENTIAL WELL WORK PLAN - RESIDENTIAL WELL
SAMPLING
SAINT-GOBAIN PERFORMANCE PLASTICS FACILITY

TITLE
**ANALYTICAL RESULTS SUMMARY
ATTACHMENT 13 - ALTERNATE WATER DESIGNATION
AREA 5**

CONSULTANT



PROJECT NO.
1668623

CONTROL

REV.

FIGURE
A5

YYYY-MM-DD	2023-05-02
DESIGNED	RWB
PREPARED	SHL
REVIEWED	BDL
APPROVED	RWB

IF THIS MEASUREMENT DOES NOT MATCH WHAT IS SHOWN, THE SHEET SIZE HAS BEEN MODIFIED FROM: ANSI B