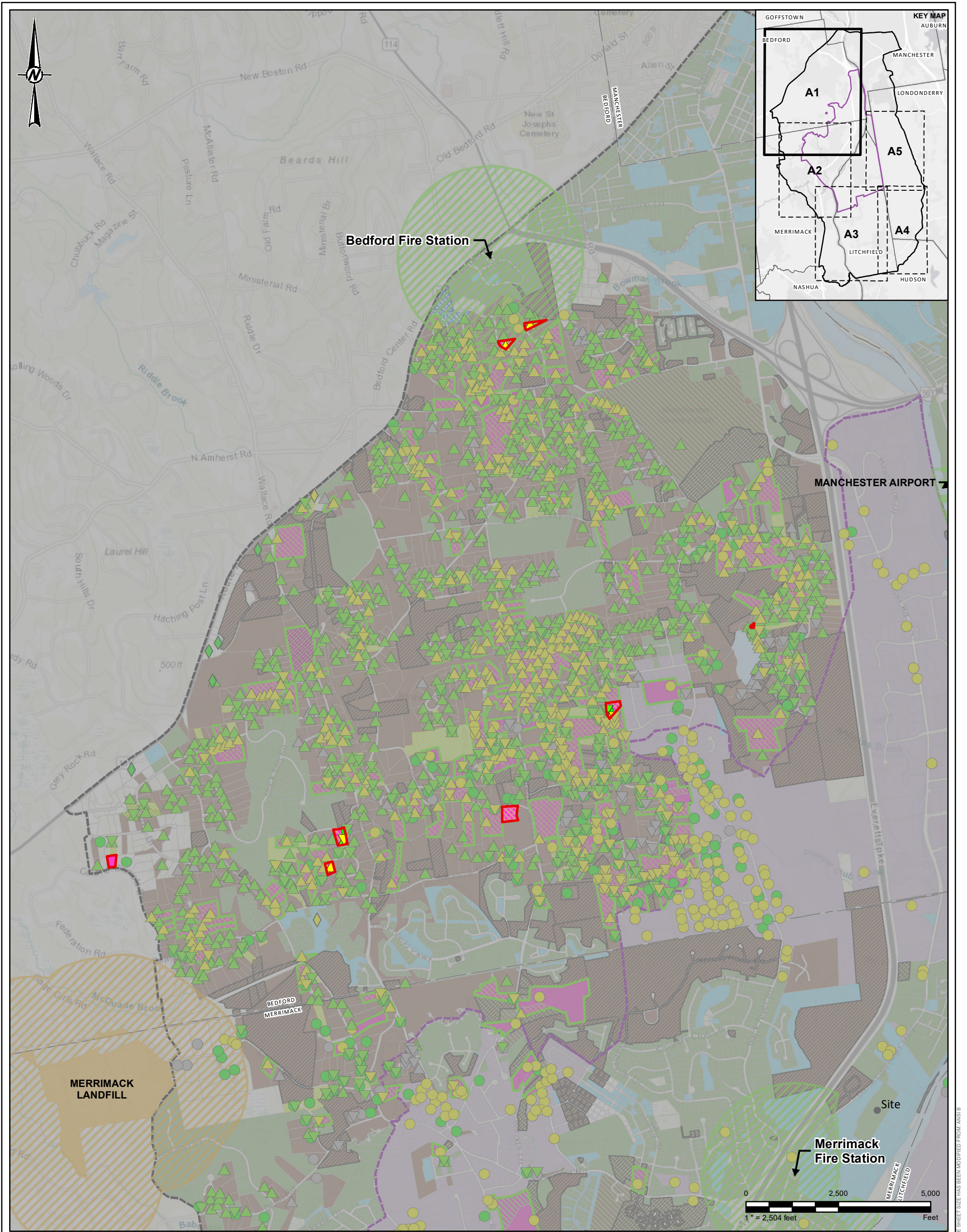


Table A-12
Alternate Water Designation
Parcel Summary

ID ¹	Town	Street Name	Street Number	Map	Block	Lot	SLUC	BW Number	POET System
AW-12001	BEDFORD	COL DANIELS DR	63	31	6	8	11	BW-01053	X
AW-12002	BEDFORD	DEVONSHIRE WY	9	33	11	5	11	BW-01050	X
AW-12003	BEDFORD	GAGE RD	10	33	21	1	11	BW-01059	X
AW-12004	BEDFORD	PILGRIM DR	50	13	5	11	11	BW-01047	X
AW-12005	BEDFORD	PURITAN DR	18	13	5	17	11	BW-01054	X
AW-12006	BEDFORD	SEBBINS POND DR	53	25	11	0	12	BW-01051	X
AW-12007	BEDFORD	SETON DR	40	32	31	19	11	BW-01058	X
AW-12008	BEDFORD	WIGGIN RD	18	32	30	17	11	BW-01057	X
AW-12009	LITCHFIELD	PAGE RD	155	003	0	0021	11	BW-01049	X
AW-12010	LONDONDERRY	LAFAYETTE RD	3	005	048	25	11	BW-01056	X
AW-12011	LONDONDERRY	LORRAINE DR	12	005	050	26	11	BW-01052	X

Notes

1) Alternate water status based on results through February 8, 2023.



- Attachment 12 Alternate Water Parcel
- Alternate Water Assigned in Separate Attachment
- Pre-GMZ Boundary (see Note 1)
- Outer Boundary (see Note 1)
- Town Boundary
- NHDES Sample Location
- WSP Sample Location
- WSP Resample Location
- PWS Sample Location
- PFOA Results**
- Non-detect
- ≤12 ppt
- >12 ppt

- Addendum 16 Properties**
- Identified for Resampling - Addendum 16
- Identified for Resampling - Prior Addendum
- Identified for Sampling or Confirmation of Water Supply Status
- Work Plan and Addendum 1, 2, 3, 4, 5, 6, 7, 8, 9, 10, 11, 12, 13, 14 and 15 Properties**
- Properties not Currently Eligible for Sampling
- Confirmed Connection to PWS

- Occupants have been Offered Bottled Water
- Identified for Sampling Where Occupants have been Offered Bottled Water
- Identified for Sampling or Confirmation of Water Supply Status
- Property-Water Main Status**
- Access to Alternate Water (if applicable) confirmed by Consent Decree
- Connection to PWS Confirmed
- Access to Water Main is Likely
- Access to Water Mains is not Likely
- Potential Other Sources
- Fire Stations 2500 ft Buffer
- Airport Potential Source Boundary
- Landfill Boundary 2000 ft Buffer
- Landfill - Approximate GMZ Boundary Before AGQS

NOTE(S)
1. PRE-GMZ BOUNDARY AND OUTER BOUNDARY FROM ATTACHMENT C OF CONSENT DECREE, STATE OF NEW HAMPSHIRE, DEPT. OF ENVIRONMENTAL SERVICES V. SAINT-GOBAIN PERFORMANCE PLASTICS CORPORATION, MARCH 20, 2018.
2. BOTTLED WATER STATUS BASED ON RESULTS RECEIVED THROUGH FEBRUARY 8, 2023.
3. PFOA DATASET INCLUDES DATA RECEIVED AS OF JANUARY 31, 2023, AND DATA PROVIDED BY NHDES ON AUGUST 31, 2022.
4. MOST RECENT DATA FOR EACH LOCATION IS SHOWN. IF MULTIPLE SAMPLES WERE TAKEN ON THE SAME DATE, THE SAMPLE WITH THE HIGHEST VALUE IS SHOWN.
5. PUBLIC WATER SUPPLY (PWS) LOCATIONS AND DATA PROVIDED BY NHDES ON APRIL 21, 2021.

REFERENCE(S)
1. COORDINATE SYSTEM: NAD 1983 STATEPLANE NEW HAMPSHIRE FIPS 2800 FEET
2. BASEMAP: ESRI, HERE, GARMIN, (C) OPENSTREETMAP CONTRIBUTORS, AND THE GIS USER COMMUNITY
SOURCES: ESRI, HERE, GARMIN, INTERMAP, INCREMENT P CORP., GEBCO, USGS, FAO, NPS, NRCAN, GEOBASE, IGN, KADASTER NL, ORDNANCE SURVEY, ESRI JAPAN, METI, ESRI CHINA (HONG KONG), (C) OPENSTREETMAP CONTRIBUTORS, AND THE GIS USER COMMUNITY

CLIENT

SAINT-GOBAIN PERFORMANCE PLASTICS

PROJECT
RESIDENTIAL WELL WORK PLAN-RESIDENTIAL WELL SAMPLING
SAINT-GOBAIN PERFORMANCE PLASTICS FACILITY
MERRIMACK, NH

TITLE
**ANALYTICAL RESULTS SUMMARY
ATTACHMENT 12 - ALTERNATE WATER DESIGNATION
AREA 1**

CONSULTANT



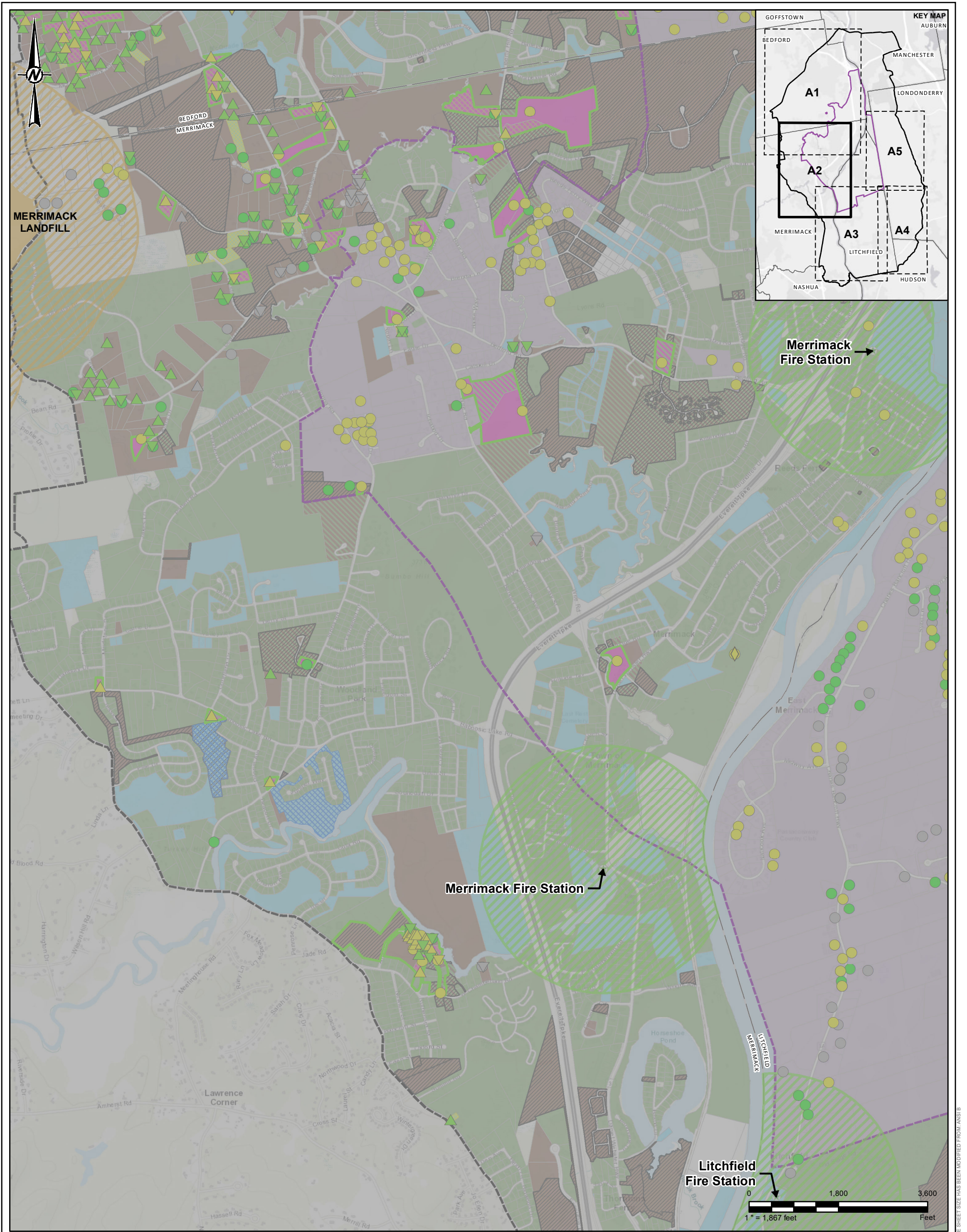
PROJECT NO.
1668623

CONTROL

REV.

FIGURE
A1

YYYY-MM-DD	2023-03-14
DESIGNED	RWB
PREPARED	EMM
REVIEWED	BOL
APPROVED	RWB



- Alternate Water Assigned in Separate Attachment
- Pre-GMZ Boundary (see Note 1)
- Outer Boundary (see Note 1)
- Town Boundary
- NHDES Sample Location
- WSP Sample Location
- WSP Resample Location
- PWS Sample Location
- PFOA Results
- Non-detect
- ≤12 ppt
- >12 ppt
- Addendum 16 Properties
- Identified for Resampling - Prior Addendum
- Identified for Sampling or Confirmation of Water Supply Status
- Work Plan and Addendum 1, 2, 3, 4, 5, 6, 7, 8, 9, 10, 11, 12, 13, 14 and 15 Properties
- Properties not Currently Eligible for Sampling
- Confirmed Connection to PWS
- Occupants have been Offered Bottled Water
- Identified for Sampling Where Occupants have been Offered Bottled Water

- Identified for Sampling or Confirmation of Water Supply Status
- Property-Water Main Status
- Access to Alternate Water (if applicable) confirmed by Consent Decree
- Connection to PWS Confirmed
- Access to Water Main is Likely
- Access to Water Mains is not Likely
- Potential Other Sources
- Fire Stations 2500 ft Buffer
- Landfill Boundary 2000 ft Buffer
- Landfill - Approximate GMZ Boundary Before AGQS

NOTE(S)

1. PRE-GMZ BOUNDARY AND OUTER BOUNDARY FROM ATTACHMENT C OF CONSENT DECREE, STATE OF NEW HAMPSHIRE, DEPT. OF ENVIRONMENTAL SERVICES V. SAINT-GOBAIN PERFORMANCE PLASTICS CORPORATION, MARCH 20, 2018.

2. BOTTLED WATER STATUS BASED ON RESULTS RECEIVED THROUGH FEBRUARY 8, 2023.

3. PFOA DATASET INCLUDES DATA RECEIVED AS OF JANUARY 31, 2023, AND DATA PROVIDED BY NHDES ON AUGUST 31, 2022.

4. MOST RECENT DATA FOR EACH LOCATION IS SHOWN. IF MULTIPLE SAMPLES WERE TAKEN ON THE SAME DATE, THE SAMPLE WITH THE HIGHEST VALUE IS SHOWN.

5. PUBLIC WATER SUPPLY (PWS) LOCATIONS AND DATA PROVIDED BY NHDES ON APRIL 21, 2021.

REFERENCE(S)

1. COORDINATE SYSTEM: NAD 1983 STATEPLANE NEW HAMPSHIRE FIPS 2800 FEET

2. BASEMAP ESRI, HERE, GARMIN, (C) OPENSTREETMAP CONTRIBUTORS, AND THE GIS USER COMMUNITY

SOURCES: ESRI, HERE, GARMIN, INTERMAP, INCREMENT P CORP., GEBCO, USGS, FAO, NPS, NRCAN, GEOBASE, IGN, KADASTER NL, ORDNANCE SURVEY, ESRI JAPAN, METI, ESRI CHINA (HONG KONG), (C) OPENSTREETMAP CONTRIBUTORS, AND THE GIS USER COMMUNITY

CLIENT

SAINT-GOBAIN PERFORMANCE PLASTICS


PROJECT

RESIDENTIAL WELL WORK PLAN-RESIDENTIAL WELL SAMPLING
SAINT-GOBAIN PERFORMANCE PLASTICS FACILITY
MERRIMACK, NH

TITLE

ANALYTICAL RESULTS SUMMARY
ATTACHMENT 12 - ALTERNATE WATER DESIGNATION
AREA 2

CONSULTANT



YYYY-MM-DD

2023-03-14

DESIGNED

RWB

PREPARED

EMM

REVIEWED

BDL

APPROVED

RWB

PROJECT NO.

CONTROL

REV.

FIGURE

1668623

-

-

A2

IF THIS MEASUREMENT DOES NOT MATCH WHAT IS SHOWN, THE SHEET SIZE HAS BEEN MODIFIED FROM ANSI B

1in



- Attachment 12 Alternate Water Parcel
- Alternate Water Assigned in Separate Attachment
- Pre-GMZ Boundary (see Note 1)
- Outer Boundary (see Note 1)
- Town Boundary
- NHDES Sample Location
- WSP Sample Location
- WSP Resample Location
- PWS Sample Location
- PFOA Results
 - Non-detect
 - ≤12 ppt
 - >12 ppt

- Addendum 16 Properties
 - Identified for Resampling - Addendum 16
 - Identified for Resampling - Prior Addendum
 - Identified for Sampling or Confirmation of Water Supply Status
- Work Plan and Addendum 1, 2, 3, 4, 5, 6, 7, 8, 9, 10, 11, 12, 13, 14 and 15 Properties
 - Properties not Currently Eligible for Sampling
 - Confirmed Connection to PWS

- Occupants have been Offered Bottled Water
- Identified for Sampling Where Occupants have been Offered Bottled Water
- Identified for Sampling or Confirmation of Water Supply Status
- Property-Water Main Status
 - Access to Alternate Water (if applicable) confirmed by Consent Decree
 - Connection to PWS Confirmed
 - Access to Water Main is Likely
 - Access to Water Mains is not Likely
 - Potential Other Sources
 - Fire Stations 2500 ft Buffer
 - Landfill Boundary 2000 ft Buffer

NOTE(S)
1. PRE-GMZ BOUNDARY AND OUTER BOUNDARY FROM ATTACHMENT C OF CONSENT DECREE, STATE OF NEW HAMPSHIRE, DEPT. OF ENVIRONMENTAL SERVICES V. SAINT-GOBAIN PERFORMANCE PLASTICS CORPORATION, MARCH 20, 2018.
2. BASEMAP ESRI, HERE, GARMIN, (C) OPENSTREETMAP CONTRIBUTORS, AND THE GIS USER COMMUNITY
3. PFOA DATASET INCLUDES DATA RECEIVED AS OF JANUARY 31, 2023, AND DATA PROVIDED BY NHDES ON AUGUST 31, 2022.
4. MOST RECENT DATA FOR EACH LOCATION IS SHOWN. IF MULTIPLE SAMPLES WERE TAKEN ON THE SAME DATE, THE SAMPLE WITH THE HIGHEST VALUE IS SHOWN.
5. PUBLIC WATER SUPPLY (PWS) LOCATIONS AND DATA PROVIDED BY NHDES ON APRIL 21, 2021.

REFERENCE(S)
1. COORDINATE SYSTEM: NAD 1983 STATEPLANE NEW HAMPSHIRE FIPS 2800 FEET
2. BASEMAP ESRI, HERE, GARMIN, (C) OPENSTREETMAP CONTRIBUTORS, AND THE GIS USER COMMUNITY
SOURCES: ESRI, HERE, GARMIN, INTERMAP, INCREMENT P CORP., GEBCO, USGS, FAO, NPS, NRCAN, GEOBASE, IGN, KADASTER NL, ORDNANCE SURVEY, ESRI JAPAN, METI, ESRI CHINA (HONG KONG), (C) OPENSTREETMAP CONTRIBUTORS, AND THE GIS USER COMMUNITY

CLIENT

SAINT-GOBAIN PERFORMANCE PLASTICS

PROJECT
RESIDENTIAL WELL WORK PLAN-RESIDENTIAL WELL SAMPLING
SAINT-GOBAIN PERFORMANCE PLASTICS FACILITY
MERRIMACK, NH

TITLE
**ANALYTICAL RESULTS SUMMARY
ATTACHMENT 12 - ALTERNATE WATER DESIGNATION
AREA 3**

CONSULTANT



PROJECT NO.
1668623

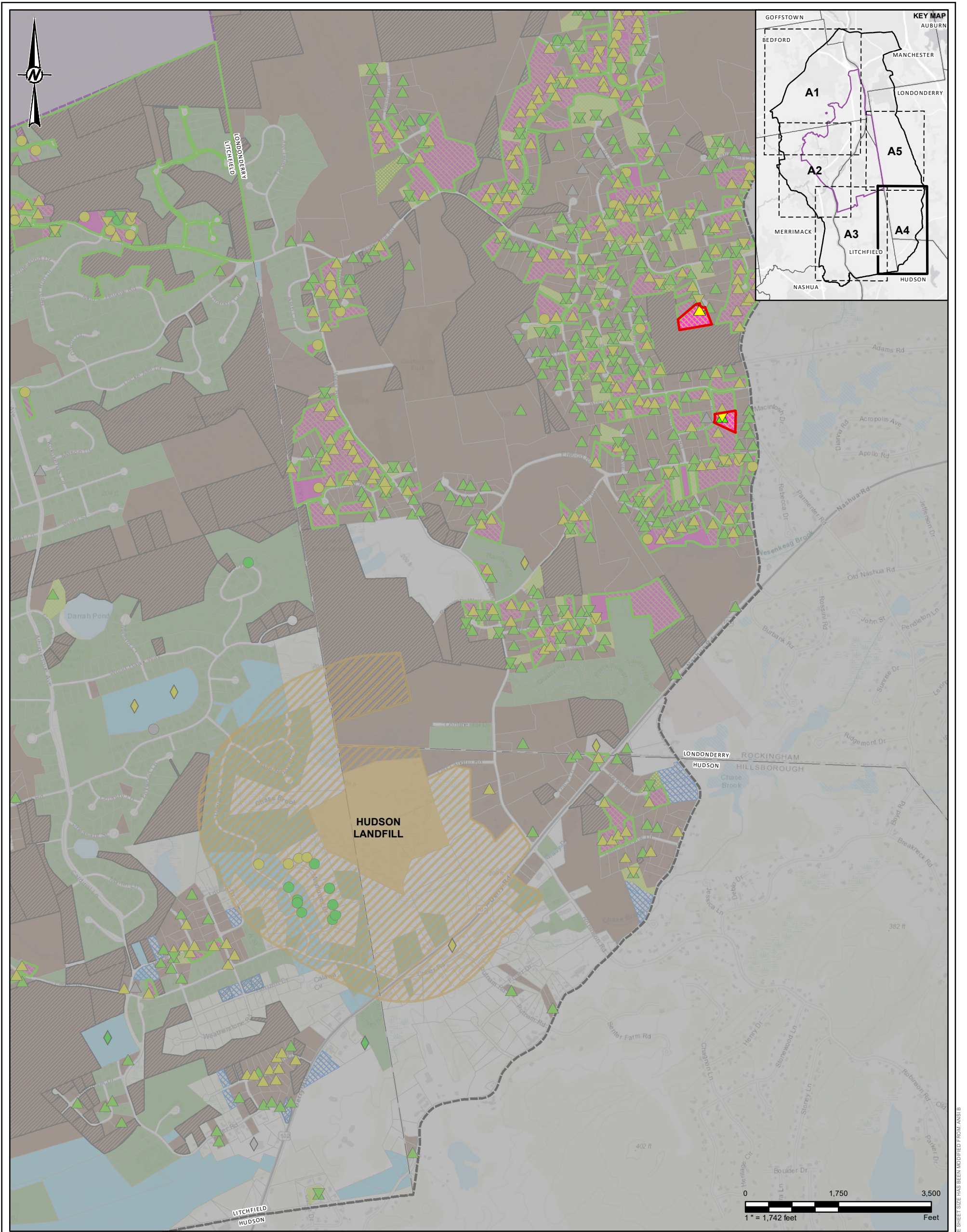
CONTROL

REV.

FIGURE
A3

YYYY-MM-DD	2023-03-14
DESIGNED	RWB
PREPARED	EMM
REVIEWED	BOL
APPROVED	RWB

IF THIS MEASUREMENT DOES NOT MATCH WHAT IS SHOWN, THE SHEET SIZE HAS BEEN MODIFIED FROM ANSI B



- Attachment 12 Alternate Water Parcel
- Alternate Water Assigned in Separate Attachment
- Pre-GMZ Boundary (see Note 1)
- Outer Boundary (see Note 1)
- Town Boundary
- NHDES Sample Location
- WSP Sample Location
- WSP Resample Location
- PWS Sample Location
- PFOA Results**
- Non-detect
- ≤12 ppt
- >12 ppt
- Addendum 16 Properties**
- Identified for Resampling - Addendum 16
- Identified for Resampling - Prior Addendum
- Identified for Sampling or Confirmation of Water Supply Status
- Work Plan and Addendum 1, 2, 3, 4, 5, 6, 7, 8, 9, 10, 11, 12, 13, 14 and 15 Properties**
- Properties not Currently Eligible for Sampling
- Confirmed Connection to PWS

- Occupants have been Offered Bottled Water
- Identified for Sampling Where Occupants have been Offered Bottled Water
- Identified for Sampling or Confirmation of Water Supply Status
- Property-Water Main Status**
- Access to Alternate Water (if applicable) confirmed by Consent Decree
- Connection to PWS Confirmed
- Access to Water Main is Likely
- Access to Water Mains is not Likely
- Landfill Boundary 2000 ft Buffer
- Landfill - Approximate GMZ Boundary Before AGQS

NOTE(S)

1. PRE-GMZ BOUNDARY AND OUTER BOUNDARY FROM ATTACHMENT C OF CONSENT DECREE, STATE OF NEW HAMPSHIRE, DEPT. OF ENVIRONMENTAL SERVICES V. SAINT-GOBAIN PERFORMANCE PLASTICS CORPORATION, MARCH 20, 2018.

2. BASEMAP ESRI, HERE, GARMIN, (C) OPENSTREETMAP CONTRIBUTORS, AND THE GIS USER COMMUNITY

SOURCES: ESRI, HERE, GARMIN, INTERMAP, INCREMENT P CORP., GEBCO, USGS, FAO, NPS, NRCAN, GEOBASE, IGN, KADASTER NL, ORDNANCE SURVEY, ESRI JAPAN, METI, ESRI CHINA (HONG KONG), (C) OPENSTREETMAP CONTRIBUTORS, AND THE GIS USER COMMUNITY

REFERENCE(S)

1. COORDINATE SYSTEM: NAD 1983 STATEPLANE NEW HAMPSHIRE FIPS 2800 FEET

2. BASEMAP ESRI, HERE, GARMIN, (C) OPENSTREETMAP CONTRIBUTORS, AND THE GIS USER COMMUNITY

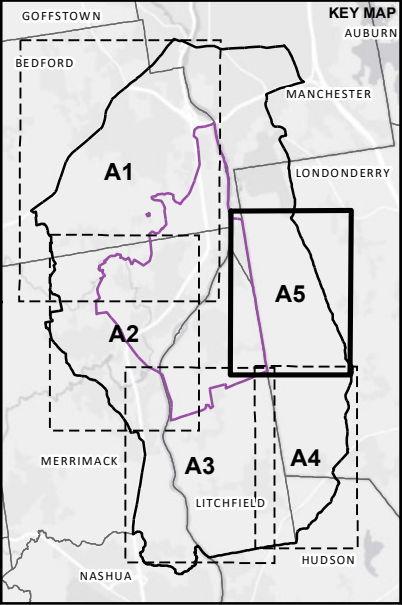
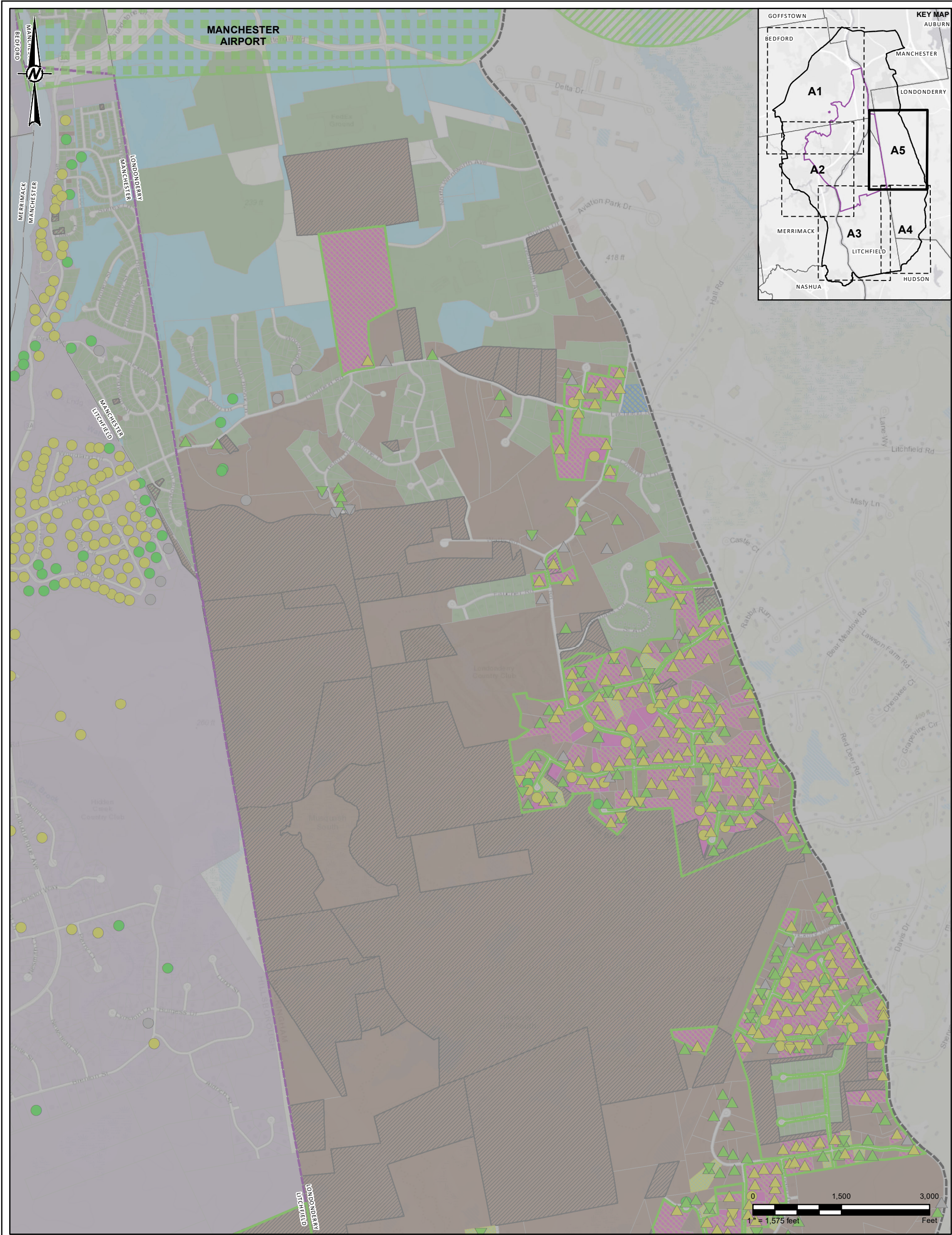
SOURCES: ESRI, HERE, GARMIN, INTERMAP, INCREMENT P CORP., GEBCO, USGS, FAO, NPS, NRCAN, GEOBASE, IGN, KADASTER NL, ORDNANCE SURVEY, ESRI JAPAN, METI, ESRI CHINA (HONG KONG), (C) OPENSTREETMAP CONTRIBUTORS, AND THE GIS USER COMMUNITY

5. PUBLIC WATER SUPPLY (PWS) LOCATIONS AND DATA PROVIDED BY NHDES ON APRIL 21, 2021.

CLIENT	
SAINT-GOBAIN PERFORMANCE PLASTICS	
PROJECT	
RESIDENTIAL WELL WORK PLAN-RESIDENTIAL WELL SAMPLING	
SAINT-GOBAIN PERFORMANCE PLASTICS FACILITY	
MERRIMACK, NH	
TITLE	
ANALYTICAL RESULTS SUMMARY	
ATTACHMENT 12 - ALTERNATE WATER DESIGNATION	
AREA 4	
CONSULTANT	
YYYY-MM-DD	2023-03-14
DESIGNED	RWB
PREPARED	EMM
REVIEWED	BDL
APPROVED	RWB
PROJECT NO.	
1668623	
CONTROL	
-	
REV.	
-	
FIGURE	
A4	

IF THIS MEASUREMENT DOES NOT MATCH WHAT IS SHOWN, THE SHEET SIZE HAS BEEN MODIFIED FROM ANSI B

1 in



- Alternate Water Assigned in Separate Attachment
- Pre-GMZ Boundary (see Note 1)
- Outer Boundary (see Note 1)
- Town Boundary
- NHDES Sample Location
- WSP Sample Location
- WSP Resample Location
- PWS Sample Location
- PFOA Results**
- Non-detect
- ≤12 ppt
- >12 ppt
- Addendum 16 Properties**
- Identified for Resampling - Prior Addendum
- Identified for Sampling or Confirmation of Water Supply Status
- Work Plan and Addendum 1, 2, 3, 4, 5, 6, 7, 8, 9, 10, 11, 12, 13, 14 and 15 Properties**
- Properties not Currently Eligible for Sampling
- Confirmed Connection to PWS
- Occupants have been Offered Bottled Water
- Identified for Sampling Where Occupants have been Offered Bottled Water

- Identified for Sampling or Confirmation of Water Supply Status
- Property-Water Main Status**
- Access to Alternate Water (if applicable) confirmed by Consent Decree
- Connection to PWS Confirmed
- Access to Water Main is Likely
- Access to Water Mains is not Likely
- Fire Stations 2500 ft Buffer
- Airport Potential Source Boundary

NOTE(S)

1. PRE-GMZ BOUNDARY AND OUTER BOUNDARY FROM ATTACHMENT C OF CONSENT DECREE, STATE OF NEW HAMPSHIRE, DEPT. OF ENVIRONMENTAL SERVICES V. SAINT-GOBAIN PERFORMANCE PLASTICS CORPORATION, MARCH 20, 2018.

2. BASEMAP ESRI, HERE, GARMIN, (C) OPENSTREETMAP CONTRIBUTORS, AND THE GIS USER COMMUNITY

3. PFOA DATASET INCLUDES DATA RECEIVED AS OF JANUARY 31, 2023, AND DATA PROVIDED BY NHDES ON AUGUST 31, 2022.

4. MOST RECENT DATA FOR EACH LOCATION IS SHOWN. IF MULTIPLE SAMPLES WERE TAKEN ON THE SAME DATE, THE SAMPLE WITH THE HIGHEST VALUE IS SHOWN.

5. PUBLIC WATER SUPPLY (PWS) LOCATIONS AND DATA PROVIDED BY NHDES ON APRIL 21, 2021.

REFERENCE(S)

1. COORDINATE SYSTEM: NAD 1983 STATEPLANE NEW HAMPSHIRE FIPS 2800 FEET

2. BASEMAP ESRI, HERE, GARMIN, (C) OPENSTREETMAP CONTRIBUTORS, AND THE GIS USER COMMUNITY

SOURCES: ESRI, HERE, GARMIN, INTERMAP, INCREMENT P CORP., GEBCO, USGS, FAO, NPS, NRCAN, GEOBASE, IGN, KADASTER NL, ORDNANCE SURVEY, ESRI JAPAN, METI, ESRI CHINA (HONG KONG), (C) OPENSTREETMAP CONTRIBUTORS, AND THE GIS USER COMMUNITY

CLIENT

SAINT-GOBAIN PERFORMANCE PLASTICS


PROJECT

RESIDENTIAL WELL WORK PLAN-RESIDENTIAL WELL SAMPLING
SAINT-GOBAIN PERFORMANCE PLASTICS FACILITY
MERRIMACK, NH

TITLE

ANALYTICAL RESULTS SUMMARY
ATTACHMENT 12 - ALTERNATE WATER DESIGNATION
AREA 5

CONSULTANT



YYYY-MM-DD	2023-03-14
DESIGNED	RWB
PREPARED	EMM
REVIEWED	BOL
APPROVED	RWB

PROJECT NO.	CONTROL	REV.	FIGURE
1668623	-	-	A5

IF THIS MEASUREMENT DOES NOT MATCH WHAT IS SHOWN, THE SHEET SIZE HAS BEEN MODIFIED FROM ANSI B